

THE METROPOLITAN MUSEUM OF ART

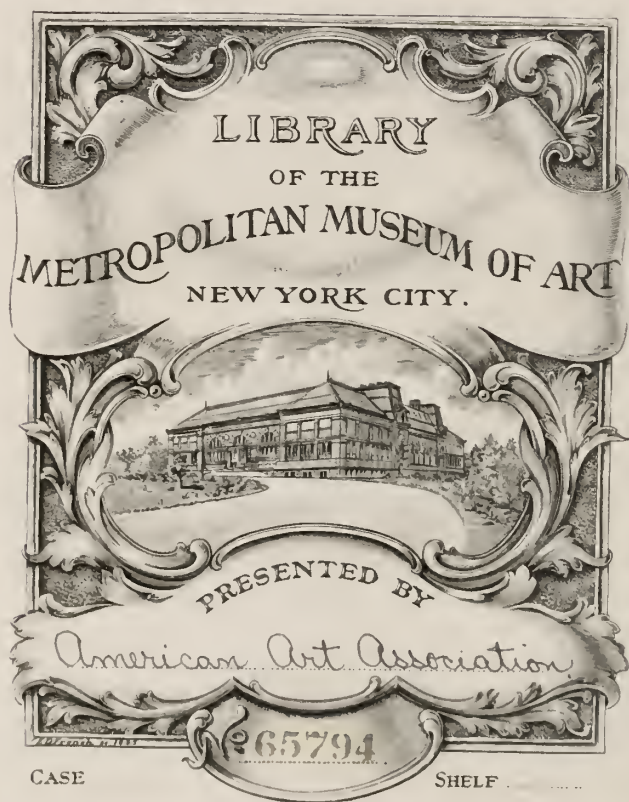


3 0620 00365863 9

American art association - Anderson
galleries, inc.

119.8

PO1
1930³



SALE NUMBER 3859

FREE PUBLIC EXHIBITION

From Saturday, October 25 Until Time of Sale
Weekdays 9 to 6 • Sunday 2 to 5

UNRESTRICTED PUBLIC SALE

October 31 and November 1
at 2:15 p. m.

EXHIBITION & SALE AT THE
AMERICAN ART ASSOCIATION
ANDERSON GALLERIES • INC.

30 East 57th Street
New York City



SALES CONDUCTED BY
O. Bernet, H. H. Parke, A. N. Bade
and H. E. Russell, Jr.

1930



Digitized by the Internet Archive
in 2014

SPANISH AND PERSIAN ANTIQUES

XVI-XVIII CENTURY FURNITURE
INCLUDING RENAISSANCE CHAIRS
CARVED TABLES · BAROQUE MIRRORS
AN ORGAN SCREEN · CHOIR STALLS

RHAGES AND OTHER PERSIAN POTTERY
SPANISH TALAVERA TILES

VELVETS, BROCADES, DAMASKS

ALPUJARRA AND ARAGONESE RUGS
MADRID & NEAR EASTERN CARPETS

Sold by Order of
THE M. D. BENZARIA COMPANY
New York · Teheran
Granada



AMERICAN ART ASSOCIATION
ANDERSON GALLERIES · INC.
New York

1930

Priced Catalogues

A PRICED COPY OF THIS CATALOGUE MAY
BE OBTAINED FOR ONE DOLLAR FOR EACH
SESSION OF THE SALE

• •

AMERICAN ART ASSOCIATION
ANDERSON GALLERIES, INC.

*Designs its Catalogues
and Directs All Details of Illustration
Text and Typography*

CONDITIONS OF SALE



1. All bids to be *PER PIECE* as numbered in the catalogue, unless otherwise mentioned.
2. The highest bidder to be the buyer. In all cases of disputed bids the lot shall be resold, but the auctioneer will use his judgment as to the good faith of all claims, and his decision shall be final.
3. Any bid which is not commensurate with the value of the article offered, or which is merely a nominal or fractional advance, may be rejected by the auctioneer if in his judgment such bid would be likely to affect the sale injuriously.
4. The name of the buyer of each lot shall be given immediately after the sale thereof, and when so required, each buyer shall sign a card giving the lot number, amount for which sold, and his or her name and address. ¶ A deposit at the actual time of the sale shall be made of all or such part of the purchase prices as may be required. ¶ If the two foregoing conditions are not complied with, the lot or lots so purchased may at the option of the auctioneer be put up again and resold.
5. Title passes upon the fall of the auctioneer's hammer, and thereafter the property is at the purchaser's risk, and neither the owner nor the Company is responsible for the loss of, or any damage to any article by theft, fire, breakage, however occasioned, or any other cause whatsoever.
6. Articles not paid for in full and not called for by the purchaser by noon of the day following that of the sale may be turned over by the Company to some carter to be carried to and stored in some warehouse until the time of the delivery therefrom to the purchaser, and the cost of such cartage and storage and any other charges will be charged against the purchaser, and the risk of loss or damage occasioned by such removal or storage will be upon the purchaser. ¶ In any instance where the bill has not been paid in full by noon of the day following that of the sale, the Company reserves the right, any other stipulation in these conditions of sale to the contrary notwithstanding, in respect to any or all lots included in the bill, at its option, either to cancel the sale thereof or to resell the same at public or private sale without further notice for the account of the buyer and to hold the buyer responsible for any deficiency sustained in so doing.
7. The Company exercises great care to catalogue every lot correctly and endeavors therein and also at the actual time of the sale to point out any error, defect, or imperfection, but guaranty is not made either by the owner or the Company of the correctness of the description, genuineness, authenticity or condition of any lot, and no sale will be set aside on account of any incorrectness, error of cataloguing or imperfection not noted or pointed out. Every lot is sold "as is" and without recourse.
8. Buying or bidding by the Company for responsible parties on orders transmitted to it by mail, telegraph, or telephone, if conditions permit, will be faithfully attended to without charge. Any purchases so made will be

subject to the foregoing conditions of sale. Orders for execution by the Company should be given with such clearness as to leave no room for misunderstanding. Not only should the lot number be given, but also the name of the object, and a bid on several objects catalogued under a single number should be stated to be so much per piece unless the description contains the notation "[Lot.]", in which case the bid should be stated to be so much FOR THE LOT. If the one transmitting the order is unknown to the Company, a deposit must be sent or reference submitted. Shipping directions should also be given.

9. The Company will afford every facility for the employment of carriers and packers by the purchasers, but will not be responsible for any damage arising from the acts of such carriers and packers.

*These Conditions of Sale cannot be altered except by
an Officer of the Company*

SALES CONDUCTED BY

O. BERNET ✓ H. H. PARKE ✓ A. N. BADE
AND H. E. RUSSELL, JR.

AMERICAN ART ASSOCIATION
ANDERSON GALLERIES, INC.

30 EAST 57TH STREET
NEW YORK CITY

TELEPHONE PLAZA 1270

CATALOGUES ON REQUEST

ORDER OF SALE

FIRST SESSION

FRIDAY AFTERNOON, OCTOBER THIRTY-FIRST

Spanish and Persian Pottery	1- 21
Embroideries, Velvets, and Brocades	22- 57
Spanish Rugs and Carpets of the Eighteenth and Nineteenth Centuries	58- 85
Furniture and Decorations	86-230

SECOND AND LAST SESSION

SATURDAY AFTERNOON, NOVEMBER FIRST

Spanish and Persian Pottery	231-253
Embroideries, Velvets, and Brocades	254-290
Spanish and Near Eastern Rugs and Carpets of the Seventeenth, Eighteenth, and Nineteenth Centuries	291-318
Furniture and Decorations	319-447

FIRST SESSION

Friday, October 31, 1930, at 2:15 p.m.

Catalogue Numbers 1 to 230 Inclusive

SPANISH AND PERSIAN POTTERY

1. TWO 'RHODIAN' DECORATED FAÏENCE PLATES *XVI Century*
Painted with flowers and meandered vines in ferrous red and green
on white ground. *Diameter, 9 inches*
3 -
2. DECORATED FAÏENCE WINE BOTTLE AND PIPE JAR
Persian, XVI Century
Painted with Mongolian figures and flowers in cobalt blue. Repaired.
[Lot.] *Heights, 7½ and 11 inches*
7⁵⁰ -
3. FRAMED SET OF NINE GOTHIC GLAZED TILES
Granada, XI Century
Each tile decorated with a running hare in slightly varied attitudes.
Incised and painted on a light ground. Chipped.
Height, 13 inches; width, 13 inches
5 -
4. CATALAN GLAZED POTTERY JAR WITH RELIEF DECORATION
Oviform, modeled in relief with lateral ridges enclosing presentations
of early Christian symbols, masks, etc. Coated with a yellowish
green glaze. *Height, 24 inches*
12⁵⁰ -
5. RHAGES BLUE GLAZED POTTERY WINE BOTTLE
Persian, XII-XIII Century
Bulbous-shaped with scalloped flaring mouth, glazed rich cobalt blue
and painted with floral motives and palmettes. Repaired.
Height, 9½ inches
17⁵⁰ -
[See illustration on following page]
6. RHAGES BLUE GLAZED POTTERY WINE EWER
Persian, XII-XIII Century
Ribbed melon-shaped body, the neck, spout and handle restored.
Glazed in shaded cobalt blue and painted with Cufic inscription and
leaf arabesque in soft brown. Some iridescence. *Height, 9 inches*
12⁵⁰ -
[See illustration on following page]



[5]

[7]

[6]

7. GUEBRI SGRAFFIATO-DECORATED POTTERY BOWL

Persian, IX-X Century

With flaring sides and slightly raised foot, interior incised with a human-headed animal grotesque, arabesques, leaves and flowers. Glazed ivory white and brown. Repaired. *Diameter, 7 inches*

40-

[See illustration]

8. TURQUOISE GLAZED POTTERY JAR *Andalusian, XVIII Century*

Pear-shaped, with spirally fluted short neck. Glazed rich turquoise green, and set into scrolled iron tripod.

Height with stand, 32 inches; diameter, 20 inches

45-

9. PANEL OF EIGHT POLYCHROMED TILES *Persian, XVII Century*

Design in the form of a white mihrab patterned with a close design of blue and yellow flowers, the upper spandrels in turquoise blue and yellow. Framed. Two tiles repaired.

Height, 32½ inches; width, 16½ inches

80-

10. RHAGES DECORATED SMALL BOWL *Persian, XIII Century*

Choice piece, the interior incised with a medallion portrait of a warrior, the rim with a band of Cufic inscription. Glazed pale turquoise.

Diameter, 5¾ inches; height, 3¼ inches

17 50-

11. HISPANO-MOESQUE POTTERY JAR *XIth Century*
Ovoid, with short neck, glazed terra cotta; modeled with serrated band around the shoulder. Set into scrolled iron tripod.

Pers

Height with stand, 37 inches; diameter, 18 inches

12. TWO GREEN GLAZED POTTERY JARS *Andalusian, XIth Century*
Pear-shaped, glazed cucumber green, and set into scrolled iron tripod.

Height with stand, 29 inches

[NUMBER 14]

[NUMBER 13]

13. RAKKA POTTERY VASE *Mesopotamian, XIII Century*
Straight-sided flaring bowl with eight loop handles around the shoulder. Coated with shaded turquoise blue glaze and decorated with a band of Arabic description in black. Rim repaired.

40-

Diameter, 10 inches; height, 6½ inches

[See illustration]

14. RAKKA POTTERY BOWL *Mesopotamian, XIII Century*
Straight-sided shallow bowl with flattened rim. Glazed in shaded turquoise and finely decorated with foliage arabesques in indigo. Some iridescence. Repaired.

27
50-*Height, 5½ inches; diameter, 10½ inches*

[See illustration]

15. RHAGES GREEN GLAZED POTTERY VASE *Persian, XII-XIII Century*
Pear-shaped body and short cylindrical neck, three small loop handles at the shoulder. Glazed deep apple green with silvery iridescence. Neck repaired.

32

Height, 12½ inches

16. SULTANABAD POTTERY VASE *Persian, XII Century*
Ovoid jar with four loop handles at the shoulder. Cracked brilliant
40 turquoise glaze, largely coated with iridescence. *Height, 16 inches*
17. KIRMAN GLAZED POTTERY TWO-HANDLED JAR *Persian, XVII Century*
50 Amphora-shaped jar invested with brilliant deep turquoise glaze of
27 vitreous quality, finely cracked. *Height, 25 inches*
18. FAÏENCE TALAVERA TILE PICTURE *Spanish, XVIII Century*
Pastoral scene showing peasants tending sheep and preparing a meal
by a stone bridge with buildings, trees, etc. Composed of nine tiles,
30- in pine frame. *Height, 33 inches; width, 32 inches*

[See illustration]



[NUMBER 18]

19. THIRTY-TWO HISPANO-MOESQUE ENAMELED POTTERY TILES

Malaga, XII-XI Century

40 Distinct Moorish type, forming eight formal rosettes in lozenges comprised of interlaced strapwork, in white, brown and turquoise enamel glaze. Framed. *Length, 40 inches; width, 23 inches*

20. DECORATED ENAMEL GOBLET

Persian, XVII Century

50
17 Painted with bust portraits of harem beauties in oval medallions, also flowers and birds. *Height, 4¾ inches*

21. HISPANO-MOESQUE TERRA COTTA MOSQUE JAR *XII Century*

250- Tapered ovoid body with two slight projections at the shoulders, the body modeled in low relief with concentric circles paneled and patterned with calligraphic inscriptions. *Height, 33 inches*

[See illustration]



[NUMBER 21]

EMBROIDERIES, VELVETS, AND BROCADES

22. THREE SPANISH EMBROIDERED LINEN AND LACE COVERS
Worked in pink and blue silks with fantastic animals, birds, tulips and carnations, with *entredeux* and borders of peasant lace. [Lot.]
20 - *Length of two, 46 inches; width, 26 inches*
Length of one, 50 inches; width, 27 inches
23. LYONS CRIMSON VELVET TABLE COVER
Bordered with gold galloon. Rose patina.
10 - *Length, 53 inches; width, 58 inches*
24. SPANISH EMBROIDERED SILK CHURCH BANNER
Formal designs in brightly colored patchwork, centred with a painted canvas octagonal medallion showing crucifix and stigmata.
30 - *Length, 51 inches; width, 48 inches*
25. TWO SPANISH EMBROIDERED LINEN PUNTO TIRATO LACE COVERS
Embroidered in silks with fantastic animals, birds, and tulips; *entredeux* and borders of lace in geometrical patterns.
40 - *Length, 53 inches; width, 29 inches*
Length, 48 inches; width, 22 inches
26. PANEL OF OLD TOLEDO SILK DAMASK
Crimson ground patterned in old-gold with a small lattice enclosing formalized floral motives. Paned and edged with narrow gold galloon.
25 - *Length, 5 feet 3 inches; width, 21 inches*
27. CROSS-STITCH NEEDLEWORK SAMPLER BORDER
Spanish, XVIII Century
Worked in pastel silks with jardinières of flowers and trees, formalized animals, and peasant figures, with signature and numerals.
30 - *Length, 5 feet 4 inches; depth, 8 inches*
28. DRAP D'OR CUT VELVET PART OF A ROBE *Russian, circa 1800*
Rose-crimson velvet cut to a lozenge diaper design enclosing small sprays of blossoms and voided in a gold ground.
15 -



[NUMBER 29]

29. GOLD-EMBROIDERED RUBY VELVET FRONTAL *Early XVIII Century*
Beautiful deep ruby velvet, embroidered in gold with a border of strap scrollings, cartouches, and sprays of roses and lilies, surrounding naive appliqué needlepointed figures of saints.

80- *Length, 5 feet; depth, 38½ inches*

[See illustration]

30. SPANISH BLUE SILK DAMASK COVERLET
Sapphire blue silk woven with an all-over design of foliations.

45- *6 feet square*

31. LOUIS XV BLUE SILK BROCADE TABLE COVER
Spanish, XVIII Century

50- *Patterned with parallel serpentine ivory ribbons sustaining nosegays of pastel-colored flowers. Worn.*

32 *Length, 6 feet 2 inches; width, 55 inches*

32. SPANISH BROCADE SWALLOWTAIL BANNER
Dove-gray ground brocaded in pastel colors with jardinières of flowers connected by serpentine lacelike bands. Edged with gold galloon.

15- *Length, 6 feet 8 inches; width, 42 inches*

33. CRIMSON AND IVORY FLORAL LAMPAS HANGING
Louis Philippe Period
 25- Silvery ground patterned in crimson and golden yellow with spatulate leaf motives enclosing rocaille-rococo leaf ovals. Valanced with a hand-knotted fringe. *Length, 6 feet; width, 5 feet 4 inches*
34. LOUIS XIII CRIMSON SILK DAMASK ALTAR FRONTAL
 25- Rose-crimson silk patterned with angular sprays of flowers in the Louis XIII taste; valanced with a particolored fringe and paneled in gold galloon. *Length, 6 feet 7 inches; depth, 44 inches*
35. RESIT APPLIQUÉ-EMBROIDERED CRIMSON COVERLET
XVIII Century
 15- Embroidered with rows of pear-shaped floral motives in indigo and white silks on a ground of crimson felt. Three borders of floral meanders. *6 feet 6 inches square*
36. SILK-EMBROIDERED LINEN TABLE COVER *Levantine, XVIII Century*
 25- Worked with masses of scattered sprays of scarlet and orange carnations divided by floral bands in green and scarlet, enriched with small insets of mirror fragments. *Length, 6 feet 6 inches; width, 58 inches*
37. AMETHYST VELVET TABLE COVER *Empire Period*
 40- Centred with a galloon medallion and edged with gold fringe. *Length, 6 feet 10 inches; width, 41 inches*
38. APPLIQUÉ-EMBROIDERED CRIMSON DAMASK FRONTAL
Spanish, Louis XIV Period
 20- Panel of fine rose-crimson damask patterned with opposed serrated leaves, and appliqué-embroidered at a later date in golden-yellow damask with the insignia of Charles V, bordered with scrollings. *Length, 6 feet 9 inches; width, 6 feet 5 inches*
39. GENOESE MOSS GREEN VELVET FRONTAL, WITH SEVENTEENTH CENTURY SILK NEEDLEPAINTING
 160- Frontal of fine old Botticelli green velvet, bordered with gold lace galloon and appliqué with an oval medallion needlepainted in silks and gold with a group depicting the Assumption of the Virgin, with four cherubs, of Spanish workmanship. *Length, 6 feet 6 inches; depth, 54 inches*



[NUMBER 40]

40. RENAISSANCE DRAP D'OR CRIMSON BROCATELLE TABLE COVER

Spanish, XVI Century

Fond d'or, beautifully woven in crimson silk and gold with an all-over design of interlacing ogivals enclosing pomegranates and spatulate palmettes interlinked by curling branches. Rare.

220-

Length, 6 feet 6 inches; width, 6 feet 2 inches

[See illustration]

41. CUT AND UNCUT RUBY VELVET TABLE RUNNER
 Developing a bold Louis Quatorze design of scrolling leafage supporting large peony blossoms and leafage. Edged with narrow gold galloon.
 15- *Length, 7 feet 2 inches; width, 19 inches*
42. GOLD AND SILVER BROCADED SILK FRONTAL *Louis XVI Period*
 Striped ivory silk and silver ground, divided into narrow panels by infloretted gold bands enclosing detached sprays of delicate pastel flowers with green leafage.
 50- *Length, 7 feet 8 inches; depth, 27 inches*
43. CANARY YELLOW SILK DAMASK COVERLET
Spanish, Early XVIII Century
 30- Design of ogival branches of leafage supporting pairs of pomegranates and enclosing spatulate floral sprays; two widths.
Length, 7 feet 7 inches; width, 5 feet 4 inches
44. EMBROIDERED FAWN SILK COPE WITH EIGHTEENTH CENTURY NEEDLEPAINTED HOOD
 135- Cope of fawn silk taffetas, embroidered allover with tiny sprigs of pastel-colored flowers; hood with oval medallion of Spanish needle-painting in fawn and blue silks and silver thread, depicting the Virgin and Child and two donors.
Length, 7 feet 2 inches; depth, 54 inches
45. CERULEAN BLUE AND SILVER BROCADE PLUVIALE
Louis XVI Period
 50- Brocaded with fluttering pale blue ribbons superimposed by trailing branches and nose-gays of flowers in silver.
Length, 7 feet 9 inches; depth, 7 feet 4 inches
46. OLD SPANISH BLUE SILK BROCADE ALTAR FRONTAL
 Shaded blue ground patterned in ivory with a Régence design of leafage and lacelike floral palmettes enclosing small blossoms tinted in pastel shades; paneled and banded in narrow gold and lace galloon.
 20- *Length, 8 feet 10 inches; depth, 31 inches*
47. BLUE SILK BROCADE PANEL
Spanish, Régence Period
 25- Cerulean-blue field brocaded with alternating bands of feathery leaf palmettes and small blossoms reserved in ivory. Trimmed with gold galloon.
Length, 8 feet 5 inches; width, 37 inches

48. PANEL OF OLD SPANISH CRIMSON BROCATELLE
 Diapered ground patterned with allover scrolling leafage and blossoms.
 35 Length, 8 feet 7 inches; width, 7 feet 6 inches
49. SILK BROCADE COPE *Spanish, Louis XI' Period*
 Fluctuating greenish yellow ground brocaded with green and gold blossoms, the orphrey and hood in slightly deeper shade trimmed with a narrow silver *passementerie*.
 30 Length, 8 feet 4 inches; depth, 47 inches
50. STRIPED SILK DAMASK COVERLET *Spanish, XIX Century*
 Green ground striped in rose and yellow and *damassé* in ivory with curving branches of large peonies.
 25 Length, 8 feet 3 inches; width, 7 feet 4 inches
51. LOUIS XIV CRIMSON DAMASK COVERLET
 Rose-crimson damask, the design developing huge upcurving leaves bearing large blossoms and pomegranates; fringed.
 50 Length, 8 feet 6 inches; width, 6 feet
52. SKY BLUE FLOWERED SILK BROCADE COPE *Spanish, XVIII Century*
 Woven in brilliant colors with garlands of pink and magenta blossoms with green leafage, enclosing floral jardinières; with hood.
 60 Length, 9 feet 3 inches; depth, 52 inches
53. SPANISH GOLD-BROCADED BLACK SILK PROCESSIONAL COPE
 Striped black silk brocaded to an allover design in gold and silver with detached sheaves of wheatears, small formalized trees and well-heads.
 25 Length, 9 feet 6 inches; depth, 6 feet 10 inches
54. FOREST GREEN DAMASK COPE OF LOUIS XIII DESIGN
 Deep green silk *damassé* to an allover design of infloretted ogivals linked by coronets, the orphrey and hood paneled with gold galloon.
 50 Length, 9 feet 10 inches; depth, 56 inches
55. RÉGENCE BLUE AND IVORY SILK DAMASK COVERLET
 Pale blue ground woven in ivory with diamond-shaped floral sprays enclosed by frameworks of branches and peonies. Nineteenth century fabric.
 45 Length, 9 feet; width, 8 feet 1 inch
56. PAIR OLD SPANISH GREEN SILK FLORAL DAMASK HANGINGS
 Mellow jade green silk *damassé* with an allover design of formalized tulips; trimmed with a narrow particolored fringe.
 70 Length, 10 feet 3 inches; width, 7 feet 6 inches

57. LENGTH OF OLD LYONS RUBY VELVET

Comprising nine strips of fine old velvet in good preservation, probably of the early nineteenth century.

Total length, about 20½ yards; width, 20 inches

SPANISH RUGS AND CARPETS
OF THE XVIII AND XIX CENTURIES

58. ALPUJARRA JARDINIÈRE RUG

Jade green field woven with lateral rows of scarlet jardinières of poppies; scarlet and sage green floral border.

Length, 6 feet 6 inches; width, 5 feet

59. ALPUJARRA FLORAL RUG

Mazarine blue field, with allover design of small scarlet vases of blue roses; scarlet and blue geometrical border.

Length, 6 feet 6 inches; width, 4 feet 10 inches

60. ALPUJARRA RUG

Clair de lune field, woven with rows of scarlet flower baskets; scarlet and *tête de nègre* trellis border.

Length, 7 feet 2 inches; width, 5 feet 6 inches

61. ALPUJARRA VINE RUG

Crimson field woven with rows of green floral shrubs; green border of angular scrolled branches bearing grapes.

Length, 7 feet 2 inches; width, 5 feet 7 inches

62. ALPUJARRA RUG

Allover hexagonal green lattice enclosing formalized floral sprays in sage green and scarlet; border of stellate rosettes in colors of the field.

Length, 7 feet 2 inches; width, 5 feet 6 inches

63. ALPUJARRA VINE RUG

Tête de nègre field, woven with rows of diamond motives and jardinières in carmine, yellow, and sea green; angular scrolled branch border in carmine, with bunches of yellow grapes.

Length, 7 feet 4 inches; width, 5 feet 7 inches

[See illustration]



[NUMBER 63]

64. ALPUJARRA RUG
 All over design of cruciform lozenge motives in scarlet and golden-yellow, within a trellis border. Fringed.
 15 - *Length, 7 feet 2 inches; width, 5 feet 6 inches*
65. ARAGONESE RUG
Bois de rose field, woven in blue and white with a *semé* pattern of tiny diamond motives within a chain border.
 25 - *Length, 7 feet 3 inches; width, 6 feet 6 inches*
66. SPANISH RUG WITH UN CUT SILK PILE XVIII Century
 Sage green field with a square medallion surrounded by white bird figures; ivory border of birds and jardinières, with sage green floral border.
 70 - *Length, 7 feet 3 inches; width, 5 feet 6 inches*
67. ALPUJARRA JARDINIÈRE RUG
 Bright crimson field woven in blue and white with five jardinières of flowers, also blackbirds; surrounded by an undulating ivory branch frame and a dotted scarlet border.
 40 - *Length, 7 feet 3 inches; width, 5 feet 5 inches*
68. ALPUJARRA RUG
 Design in looped pile of lateral rows of spatulate leaf motives in scarlet, yellow, and tan; ornamental borders in colors of the field.
 55 - *Length, 7 feet 4 inches; width, 5 feet 6 inches*
69. ARAGONESE RUG
 Terra cotta field, woven with an eight-pointed star enclosed by four jardinières and a border of diamond motives in blue, olive, and white.
 20 - *Length, 7 feet 4 inches; width, 6 feet 4 inches*
70. ALPUJARRA RUG
 Sage green field patterned with scarlet diamond motives, and with scarlet trellis border; shaggy uncut pile.
 40 - *Length, 7 feet; width, 5 feet 3 inches*
71. ALPUJARRA RUG
 Leaf green field, woven with rows of crimson diamond rosettes and formalized jardinières; border of angular crimson branches of vine leaves and yellow grapes.
 35 - *Length, 7 feet 6 inches; width, 5 feet 6 inches*

72. ALPUJARRA RUG
 20- White ground patterned in looped uncut pile with a green diamond lattice enclosing cruciforms of tulips in green and scarlet; trellis border in colors of the field.
Length, 7 feet 6 inches; width, 3 feet 9 inches
73. ALPUJARRA RUG
 20 Worked in chenille fashion with allover lozenge and shrub pattern on a mustard yellow ground. Fringed.
Length, 7 feet 7 inches; width, 6 feet 7 inches
74. ARAGONESE JARDINIÈRE RUG
 30- Saffron field woven in rose-pink with lateral rows of jardinières of tulips in loops of uncut pile; fringed.
Length, 8 feet 2 inches; width, 7 feet 1 inch



[NUMBER 74]

75. ARAGONESE FLORAL RUG
 Leaf green field woven in pink with ogival frameworks of leafage forming a lattice enclosing pots of flowers; fringed.
 30- Length, 7 feet 8 inches; width, 6 feet 8 inches
76. ARAGONESE FLORAL RUG
 Scarlet field, woven in olive green with ogival frameworks of leafage containing sprays of flowers; fringed.
 25 Length, 7 feet 10 inches; width, 7 feet
77. SPANISH FLORAL CARPET *Late XVII Century*
 Allover design of quatrefoil medallions developing large sprays of formalized scarlet poppies, roses, and curling leafage, in an ivory ground. Much worn.
 30- Length, 7 feet 10 inches; width, 6 feet 4 inches
78. CREWEL NEEDLEPOINT LANDSCAPE RUG *Southern French, circa 1840*
 Worked with a floral medallion surrounded by a country landscape with farmhouses and windmills, domestic fowls, and trees; *tête de nègre* border of large pink roses set in green leafage. Rare.
 300- Length, 13 feet 2 inches; width, 8 feet 2 inches
 [See illustration]
79. ALPUJARRA RUG
 Allover repeated design of formalized flower motives alternating with birds in soft tan and green on a white ground. Fringed.
 40- Length, 7 feet 10 inches; width, 6 feet 8 inches
80. ALPUJARRA ANIMAL RUG
Tête de nègre field and border woven with rows of wine red roses surrounded by floral shrubs, jardinières of carnations, and heraldic animals.
 40- Length, 7 feet 10 inches; width, 5 feet 3 inches
81. SPANISH RUG *Circa 1800*
 Rose field, woven with a chain lattice in yellow and ivory and centred with an octagonal plaquette in turquoise, rose, and white matching the end bands.
 120- Length, 8 feet; width, 2 feet 8 inches



[NUMBER 78]

82. ALPUJARRA RUG
 30- Fine design of repeated floral palmettes in the Moorish taste, in green, terra cotta, blue and yellow on an ivory ground. Fringed.
Length, 8 feet; width, 6 feet 9 inches
83. ARAGONESE JARDINIÈRE RUG
 30- Leaf green field woven in terra cotta with lateral rows of jardinières of flowers, the ends with bands of rosetted lattice ornaments; fringed.
Length, 8 feet 2 inches; width, 7 feet 2 inches
84. ALPUJARRA RUG
 35- Worked with repeated lozenge motives enclosing formalized flowers and jardinières. In green on terra cotta ground. Fringed.
Length, 8 feet 3 inches; width, 7 feet 3 inches
85. ALPUJARRA RUG
 50- Allover design of scrolled scarlet diamond motives in a dotted deep blue field; zig-zag ribbon border in scarlet, blue, and yellow.
Length, 8 feet 9 inches; width, 6 feet 6 inches

FURNITURE AND DECORATIONS

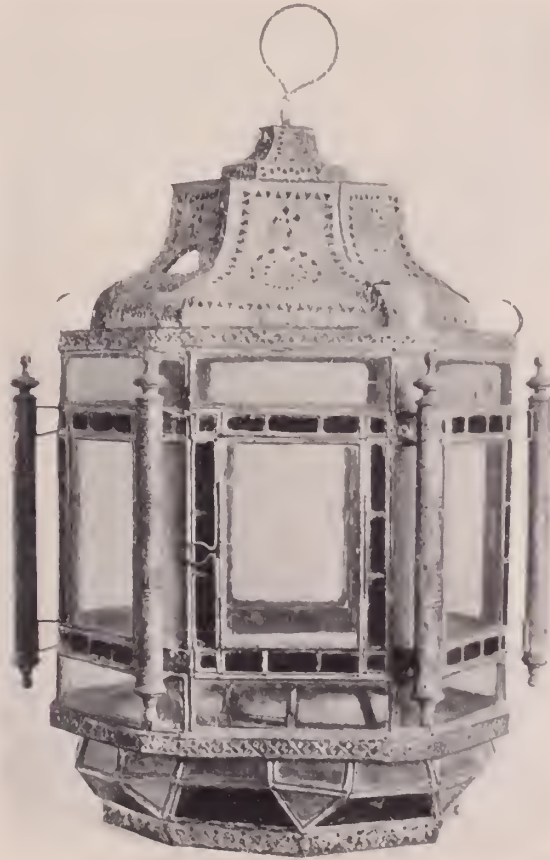
86. BRONZE MORTAR *Spanish, XVII Century*
 With molded sides and flaring rim; green patina.
 15- *Height, 8 inches; diameter, 11½ inches*
87. OLD SPANISH WROUGHT IRON HANGING LANTERN OF RENAISSANCE DESIGN
 20- Quadrangular lantern with domed top, the uprights of square section emitting coiled tendrils, and having similar lozenge-form plaquettes and brackets.
Height of lantern, 24 inches
88. PAIR WROUGHT IRON FIRE DOGS *Spanish, XVII Century*
 With baluster pillars and splayed bases. *Height, 17 inches*
 25-
89. PAIR BRASS CANDLESTICKS *Spanish, XVII Century*
 Baluster-shaped stems, urn sconces, and molded bell-shaped bases. *Height, 16½ inches*
 20-
90. PAIR BRASS CANDLESTICKS *Spanish, XVII Century*
 Similar to the preceding. *Height, 16½ inches*
 20-

91. TWO OLD SPANISH COPPER AMPHORAE

Baluster form with cylindrical neck and two loop handles.

Height, 15 1/2 inches

40-



[NUMBER 92]

92. OLD SPANISH PAINTED TOLE HANGING CHURCH LANTERN

Hexagonal glazed body with outset brick red columnar pilasters; perforated domed top. Slight damages. *Height, 24 1/2 inches*

15-

[See illustration]

93. HAMMERED COPPER WATER VESSEL

Spanish, XVIII Century

Bulbous-shaped wine or milk container with loop handles.

Height, 21 inches

35-

94. PAIR SPANISH WROUGHT IRON ANDIRONS
 In the Gothic taste. Square shaft spirally twisted in section, sur-
 mounted by a tulip finial. *Height, 28 inches*
95. PAINTED TOLE TRAY *Spanish, circa 1810*
 Oblong tray with upcurved rim having two apertures for handles;
 painted with two zebras in landscape. *Length, 30 inches; width, 22½ inches*
96. PAIR WROUGHT STEEL ANDIRONS *Spanish, XVII Century*
 On splayed bases embellished with Baroque cartouches. *Height, 23 inches*
97. PAIR REPOUSSÉ SILVER CANDELABRA *Augsburg, Early XIX Century*
 With baluster stems, domed bases, and voluted branches for four
 lights. Chased and engraved. *Height, 19 inches*
98. PAIR SPANISH GLASS AND TOLE LANTERNS
 Of stellate form, composed of sections of colored glass in a frame-
 work of *repoussé* tole. With cruciform and coronet top. *Height, 20 inches*
99. PAIR REPOUSSÉ SILVERED METAL LECTURNA
Spanish, Middle XVIII Century
 Cartouche-shaped, decorated with *repoussés* leaf volutes, flowers, and
 scrolls. Mounted on wood foundation. *Height, 17 inches; width, 14 inches*
100. PAIR SPANISH GLASS AND GILDED TOLE STELLATE LANTERNS
 Cathedral type, formed as a ten-pointed star of clear and colored
 glass in a framework of gilded tin. *Diameter, 25 inches*
101. WROUGHT IRON FIRE GUARD *Spanish Gothic*
 With three uprights supporting openwork stands for braziers; rising
 from a horizontal bar, on splayed feet. *Height, 34 inches; length, 43 inches*
102. PAIR CARVED AND GILDED WALL SWAGS *Spanish, XVII Century*
 Volute bracket hung with a pendant of pomegranates and grapes,
 with rich leafage. *Height, 30 inches*

103. SLIP-DECORATED GOLD LUSTRE PITCHER *English, circa 1810*
 Decorated with classical motive and grapevine. Ivory white slip on brilliant gold lustre ground. *Height, 5¼ inches*
 750
104. SILVER RESIST LUSTRED PITCHER *English, circa 1800*
 Spherical with loop handle and short neck, decorated with panels of flowers in silver and white resist. *Height, 5½ inches*
 15-
105. SCULPTURED ALABASTER STATUETTE *Spanish, XVII Century*
 MADONNA DEL PILA, OF SARAGOSSA. Wearing a silver crown, surmounting a column embellished with carved angel heads and escutcheon. Traces of polychromy. *Height, 20 inches*
 15-
106. CARVED, GILDED, AND POLYCHROMED CIBORIUM *Spanish, circa 1600*
 Of architectural design with one door and small base drawer, and with outset spirally twisted corner columns with acanthus-leaf capitals. The door and sides carved in bas-relief with presentation of Our Lord and two apostolic figures. *Height, 24 inches; width, 19 inches*
 30
107. TURNED WALNUT AND BROCATELLE BANQUETTE *Spanish Baroque*
 Oblong top covered in antique crimson and yellow brocatelle; on knob-turned legs and box stretcher. *Length, 30½ inches*
 45
108. CARVED PINO WOOD ANAQUEL WITH FAÏENCE JARS *Spanish, XVIII Century*
 Wall bracket fancifully carved and furnished with three Talavera faïence pitchers to hold flowers. *Height, 30 inches; width, 25 inches*
 25-
109. PAIR TURNED WALNUT JOINT STOOLS *Spanish, XVIII Century*
 Molded oblong top with pierced centre, on turned flaring legs and carved stretchers. *Height, 18 inches; width, 17 inches*
 70-
110. PAIR OF SMALL WALL MIRRORS IN CARVED AND GILDED FRAMES *Spanish, XVIII Century*
 Rectangular frame of pine carved in relief with rocaille foliage and scrolls, and retaining old gilding. Modern glass. *Height, 21 inches; width, 15 inches*
 50



[NUMBER 111]

111. SCULPTURE AND POLYCHROME STATUETTE

Spanish, XVII Century

THE VIRGIN OF THE CRESCENT. Youthful figure in gilded robes standing in the attitude of prayer, upon a crescent moon carved with a cherub head.

Height, 28 inches

[See illustration]



[NUMBER 112]

112. SCULPTURED AND POLYCHROMED GROUP

Spanish, Early XIII Century

Standing figure of a female saint, probably St. Margaret of Antioch, in richly gilded crimson tunic and green mantle; beneath her feet is a dragon.

Height, 31 inches

[See illustration]

113. SMALL MIRROR WITH CARVED, PAINTED, AND GILDED FRAME

Spanish, XVIII Century

The chamfered oblong frame fancifully carved, and with old gilding and polychromy. Modern glass.

45

Height, 18½ inches; width, 14½ inches

114. PAIR TURNED WALNUT JOINT STOOLS *Spanish, XVIII Century*

Molded oblong top with pierced centre, on turned flaring legs and carved stretchers.

70

Height, 18 inches; width, 17 inches

115. BRIDAL MIRROR IN PAINTED WOOD CASE *Persian, circa 1800*

In triptych form, with double doors opening to reveal mirror surrounded by borders of glass painted with jardinières of flowers; the doors painted on the interior and exterior with interior figure scenes and naturalistic flowers and birds. Slight damage.

60

Height, 41 inches; width open, 45 inches

116. BRIDAL MIRROR IN PAINTED WOOD CASE *Persian, XVIII Century*

The mirror proper framed in panels of floral decoration under glass and set into wood case, with two doors elaborately painted with birds and flowers in brilliant colors on an ivory ground.

95

Height, 36 inches; width, 21 inches

117. CARVED PINO WOOD COFFER *Spanish, XVIII Century*

Rectangular with slightly domed lid and molded base. Original velvet-backed iron lock plate and hinges.

15

Height, 18 inches; length, 37 inches

118. PAIR LOUIS XVI ACAJOU BEDSIDE TABLES

French, Late XVIII Century

Square top of mottled gray marble, front enclosed by rising tambour shutter, four tapered square legs with bronze shoes. Some repairs.

30

Height, 31 inches; width, 12 inches

119. PAIR SPANISH CARVED WALNUT TABOURETS
 Oblong top with drawer on turned supports and stretchers, decorated with scratch carving. *Height, 15 inches; length, 16 inches*
 50-
120. MAHOGANY TRIPOD TABLE *French, circa 1830*
 Circular figured top on turned pillar and scrolled tripod.
Height, 29 inches; diameter, 22 inches
 10
121. TWO TURNED WALNUT JOINT STOOLS *Spanish, XVIII Century*
 Molded oblong top with pierced centre, on turned flaring legs and carved stretchers. *Height, 18 inches; width, 17 inches*
 75-
122. PAIR SPANISH CARVED PINO WOOD SMALL CHESTS
 Rectangular two-handled chest, fitted with two drawers carved with geometrical rosettes, short turned stretchered legs.
Height, 28 inches; width, 20 inches
 100-
123. CARVED CHESTNUT BANQUETTE IN YELLOW AND GREEN SILK BROCHÉ *Spanish Baroque*
 Oblong seat in floral silk *broché* developing a Régence design; on lyre-shaped end supports connected by a scrolled central traverse. *Length, 29½ inches*
 25-
124. PARCEL-GILDED AND PAINTED ÉTAGÈRE *Spanish Baroque*
 Small hanging shelf with arcaded front. Finished green and enriched with gilded decoration. *Height, 35 inches; width, 25 inches*
 10-
125. LADY'S MAHOGANY SEWING TABLE *French, circa 1830*
 Oblong hinged top mounted with mirror and uncovering fitted interior. On curved legs converging to a turned stretcher. *Height, 30 inches; width, 20 inches*
 20

126. BROCADE AND TURNED WALNUT BANQUETTE

Spanish, XVII Century

Top covered in silk floral *broché*, trimmed with a particolored fringe; vase-turned and stretchered legs.

Length, 28 inches

20-

127. EIGHT CARVED AND DECORATED PINO WOOD

RUSH-SEATED SIDE CHAIRS

Aragonese, XVIII-XIX Century

Square posts with turned knob finials and arcaded slats; plaited rush seats, on turned and blocked legs with spindled double frontal stretcher. Painted and decorated with geometrical designs reserved in the unstained wood.

120-

[See illustration of one]

128. EIGHT CARVED AND DECORATED PINO WOOD

RUSH-SEATED SIDE CHAIRS

Aragonese, XVIII-XIX Century

Similar to the preceding.

100-

129. TWO CARVED CHESTNUT LOW CHAIRS

Alpujarra, XVII Century

Open back with scrolled cross rails carved with blossoms and connected by three small splats; seat in green and yellow floral *broché*; turned stretchered legs.

35-

[See illustration]

130. LOUIS XVI CARVED AND GILDED WALL MIRROR

French, XVIII Century

Beaded and molded frame with openwork cresting composed of ribbon knots and a medallion of love birds. Partly restored modern glass.

25-

Height, 34 inches; width, 17 inches

131. TWO OLD SPANISH DECORATED ÉTAGÈRES

Small hanging shelves, *sgraffiato*-carved and with painted, silvered, and gilded decoration. Slight damages.

35-

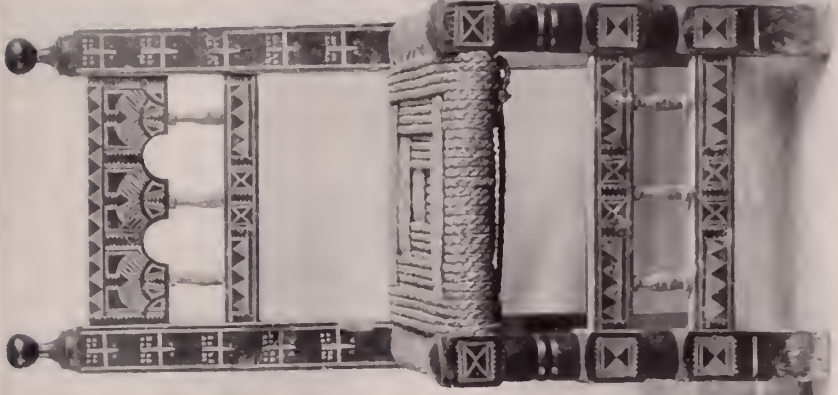
Height, 29½ inches; width, 24 inches

Height, 28 inches; width, 20½ inches

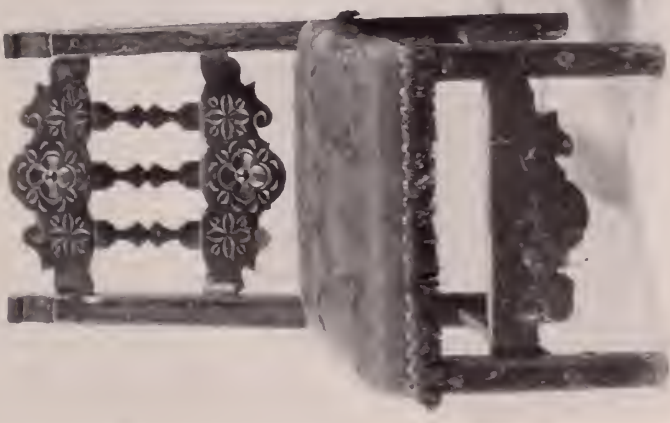
[129]



[127]



[129]



132. CARVED PIÑO WOOD COFFER *Spanish, circa 1600*
 Vestment chest of narrow oblong form with domed lid, the front and sides composed of panels carved as scroll cartouches. Wrought iron hinges and lock; interior lined with crimson damask.
 35- *Height, 20 inches; length, 53 inches*
133. PAIR TURNED WALNUT BANQUETTES IN BLUE DAMASK
 Reel- and ball-turned legs and stretchers; seat covered in turquoise blue floral damask trimmed with silver galloon.
 35-
134. PAIR CARVED AND SILVERED WOOD CARTOUCHE WALL MIRRORS *Spanish, XVIII Century*
 The frames, oval medallion-shaped, surrounded by pierced and carved interlaced strapwork shell and floral ornament. Resilvered and with modern glass. *Height, 41 inches; width, 25 inches*
 45-
135. SPANISH WALNUT BOUDOIR WRITING DESK
 Oblong, with recessed fitted superstructure; underframing with one drawer, on stretchered lyre supports. *Height, 37 inches; width, 24½ inches*
 85-
136. MAHOGANY TRIPOD TABLE *French, circa 1830*
 Circular top tilting on vase pedestal, and three curved legs. *Height, 27 inches; diameter, 28½ inches*
 20-
137. DECORATIVE OIL PAINTING *Spanish, XVII Century*
 ST. JOHN. In a rugged mountainous landscape the saint is depicted seated at right, clad in his traditional hair shirt and rose mantle; at his feet is the Lamb. *Height, 40 inches; width, 32½ inches*
 Pen
138. WALL MIRROR WITH CARVED AND PARCEL-GILDED FRAME *Spanish, XVIII Century*
 Rectangular frame, carved with borders of imbricated ornament and floral motives and parcel-gilded. Modern glass. *Height, 45 inches; width, 39 inches*
 55-



[NUMBER 139]

139. MARQUETERIE-DECORATED FRUITWOOD WRITING BUREAU

French, XVIII Century

In light wood of pleasing color, inlaid with bird and floral *marqueterie* in tinted woods. hinged and curved slant flap enclosing fitted interior two drawers below, tapered and slightly curved legs.

Height, 39½ inches; width, 31 inches

[See illustration]

140. SPANISH WALNUT COFFEE TABLE

Small drop-leaf table with one drawer and turned legs.

Height, 20 inches; length extended, 31 inches

141. WALNUT CÔFFER MOUNTED IN WROUGHT IRON
Spanish, XVII Century
 20 - Oblong with overhanging molded lid, the front and sides embellished with pierced iron mounts and handles backed with crimson velvet. With restorations. *Height, 15½ inches; length, 33 inches*
142. PAIR SCRATCH-CARVED CHESTNUT LOW CHAIRS
Alpujarran, XVIII Century
 45 - Low open back with pierced cross bar; 'stitched up' seat in yellowish green floral *broché*. Restored.
143. LOUIS XV KINGWOOD SMALL COMMODE
 45 - Veneered and banded in matched kingwood. Oblong tray top, slightly *bombé* body with three drawers, tapered and curved legs with undershelf and bronze mounts. *Height, 29½ inches; width, 21 inches*
144. GENTLEMAN'S MAPLE SHAVING STAND *French, circa 1830*
 15 - Pedestal form with pivoted drawer at centre, adjustable shaft supporting circular mirror. On curved tripod. *Height, 5 feet 6 inches*
145. DECALCOMANIE GLASS PICTURE IN GILDED FRAME
Spanish, XVIII Century
 20 - Madonna and Child with adoring angels. In contemporary molded and gilded frame elaborately carved with shells and scrolls and cruciform motive. *Size of frame: Height, 28 inches; length, 38 inches*
146. CARVED AND MARBLEIZED COFFEE TABLE *Spanish Baroque*
 50
 12 - Oblong molded top supported on open lyre-shaped ends connected by a scrolled stretcher. Finished to simulate marble. *Height, 21 inches; length, 31 inches*
147. SPANISH RENAISSANCE WALNUT VARGUEÑO ON CARVED PUENTE
 165 - Two-handled chest with fall front opening to interior fitted with numerous small drawers and compartments. The *puente* with leonic slides, on spirally twisted members and a central arcade carved with rosettes. *Total height, 52½ inches; width, 37 inches*
148. PAIR SPANISH LOUIS XV WALNUT FAUTEUILS
 55 - Cartouche-shaped back and the seat in rose-crimson floral damask, open arms, cabriole legs with dolphin-form feet.



[NUMBER 149]

149. WALL MIRROR WITH CARVED, PAINTED AND GILDED FRAME

Spanish, XVIII Century

Shaped oblong frame painted to simulate red tortoise-shell, carved in relief at the corners with groups of acanthus leaves. Modern glass.

Height, 42 inches; length, 49 inches

[See illustration]

150. SET OF FOUR SPANISH CHESTNUT SIDE CHAIRS IN GREEN DAMASK

Open back with vase-shaped splat; slip seat in green floral damask, stretched cabriole legs.

45 =
60 =

151. MAHOGANY SLANT-FRONT BOUDOIR WRITING DESK

Spanish, XIX Century

90- In the English taste; with slant front above two drawers, on cabriole legs. Trimmed with bat's-wing brasses and bail handles.

Height, 38½ inches; width, 20 inches

152. LOUIS XV CARVED AND GILDED WALL MIRROR

French, XVIII Century

20- Rectangular frame carved with gadroon ornament, leafage and an urn of flowers. Modern glass. *Height, 30 inches; width, 18 inches*

153. INLAID MAHOGANY COIFFEUSE

French, XVIII Century

40- Oblong top with two hinged flaps and rising mirror uncovering compartments, the front with three drawers and pull-out writing slide; grooved, tapered, and molded square legs. Decorated with gilded metal moldings. *Height, 28½ inches; length, 29½ inches*

154. CARVED WALNUT CENTRE TABLE, MOUNTED IN WROUGHT IRON

Spanish Baroque

35- The top carved at the edges with leafage and inlaid with a central stellate motive; on open lyre-shaped end supports with wrought iron underbraces. *Height, 30 inches; length, 32½ inches*

155. BRONZE-MOUNTED TOOLED LEATHER AND WALNUT TABLE

Spanish Baroque

65- Rectangular top of old Cordova tooled leather enriched with pierced arabesque bronze plaques and bosses backed with crimson velvet. On scrolled supports with curved iron brace. *Height, 27 inches; length, 36 inches*

156. TRUMEAU WITH DECORATIVE PAINTING

French, Late XVIII Century

15- Rectangular frame containing mirror and a contemporary painting on canvas of two lovers embracing. Frame repainted. *Height, 47 inches; width, 23 inches*

157. WALL MIRROR WITH CARVED AND PARCEL-GILDED FRAME

Spanish, XVIII Century

30- Rectangular frame with raised border, carved with echinus and leafage and parcel-gilded. Modern glass. *Length, 42½ inches; width, 35 inches*

158. CARVED MAHOGANY SLANT-FRONT WRITING DESK

Portuguese, XIX Century

70- With slant front opening to interior elaborately fitted with numerous small drawers centring a small cupboard, the door carved with a crested bird; the body with one narrow frieze drawer, above two end-on and two long drawers trimmed with butterfly brasses and bail handles.

Height, 48½ inches; width, 33 inches

159. PAIR CARVED WALNUT BENCHES

Spanish Baroque

30- Oblong top gouged at the edges, on lyre-shaped end supports connected by two wrought iron underbraces.

Length, 52½ inches

160. OLD SPANISH TURNED AND INLAID WALNUT CENTRE TABLE

30- Top with a pencil inlay developing scrollings and tendrils; supported on four splayed ball-turned stretchered legs connected by two wrought iron underbraces.

Height, 29 inches; length, 36½ inches

161. SPANISH CARVED CHESTNUT AND PINE VARGUEÑO

45- Two-handled chest, the fall front opening to interior fitted with eight small drawers faced in relief with Baroque-scrolled cartouches. The *punte* modern.

Total height, 50 inches; width, 29 inches

162. SPANISH ARCÒN IN GOATSKIN, MOUNTED IN WROUGHT IRON

25- Rectangular two-handled chest with domed cover, the decorative design executed in narrow iron bands studded with nails.

Height, 30 inches; length, 45 inches

163. PAIR CARVED WALNUT BENCHES, MOUNTED IN WROUGHT IRON

60- Oblong molded top, on three lyre-shaped end supports connected by wrought iron underbraces.

Length, 6 feet



[NUMBER 164]

164. WALL MIRROR WITH CARVED AND PARCEL-GILDED FRAME

Spanish, XVII Century

Upright pine frame, embellished with gilded carving of leaf scrolls in relief against a green painted background. Modern glass.

Height, 49 inches; width, 42 inches

[See illustration]

165. WALL MIRROR WITH CARVED AND PARCEL-GILDED FRAME

Spanish, Early XVIII Century

Rectangular frame of pine, carved at intervals with leaf motives enriched with gilding against a painted background. Modern glass.

Height, 39 inches; length, 49 inches

166. SET OF FOUR CARVED BEECHWOOD CHAIRS

40- In the Louis Seize taste. Comprising one *fauteuil* and three side chairs, covered in black and red floral damask, the frames carved with leafage and bowknotted ribbon motives.

167. CARVED WALNUT ARCON

Spanish Baroque

45- Oblong chest with molded hinged cover, the front and sides paneled into sections carved in relief with opposed S-scrolls supporting formalized blossoms; molded base with embryonic paw feet.

Height, 25½ inches; length, 55 inches

168. TWO SPANISH RENAISSANCE WALNUT AND EMBROIDERED CRIMSON ARMCHAIRS

200- Seat and low oblong back in dark crimson velvet, the latter embroidered in thread with pairs of Renaissance scrollings centring needlepainted medallions of the Virgin and Child and St. John, and of the seventeenth century; flat arms on quadrangular front posts with scroll-cut frontal stretcher. Reconstructed.

[See illustration]



[NUMBER 168]

169. WALNUT AND PINE DROP-LEAF TABLE *Spanish, XVII Century*
 Circular top with two drop-leaves, the underframing fitted with two
 end drawers, on ball- and reel-turned box-stretchered legs.
 35- *Height, 31 inches; diameter, 45 inches*
170. FIVE OLD SPANISH CRIMSON DAMASK AND WALNUT SIDE CHAIRS
 Open back with concave shell as cresting, seat in crimson floral
 75- damask, cabriole stretchered legs.
171. WALL MIRROR WITH CARVED, PAINTED AND GILDED FRAME
Spanish, XVIII Century
 Shaped oblong frame painted gray and gold and carved with rocaille
 85- scrolls in relief in gilded borders of imbricated ornament. Modern
 glass. *Height, 34½ inches; length, 40 inches*
172. WALL MIRROR WITH CARVED, PAINTED AND GILDED FRAME
Spanish, XVIII Century
 45- Companion to the preceding mirror. Modern glass.
Height, 34½ inches; length, 40 inches
173. CARVED WALNUT CENTRE TABLE *Spanish Baroque*
 The frieze with hinged section opening to reveal three drawers;
 supported on carved panel members connected by a turned H-
 20- stretcher. *Height, 33 inches; length, 47½ inches*
174. CARVED MAHOGANY SETTEE IN GREEN DAMASK
Spanish, circa 1800
 Rectangular back fret-carved to a symmetrical design of interlaced
 80- scrolls above a series of jardinières; open arms, seat in green floral
 damask, canalated round legs. *Length, 6 feet*
175. TURNED WALNUT DROP-LEAF TABLE *Spanish, XVII Century*
 Oval molded top with two drop leaves, which when opened are
 supported by butterfly hinges, the underframing with two drawers,
 40- on turned columnar box-stretchered legs. Restored.
Height, 29 inches; length open, 49 inches
176. SET OF SIX SPANISH CHESTNUT LOW CHAIRS IN GREEN VELVET
 Cartouche-shaped back and the seat covered in emerald green velvet,
 45- the latter trimmed with a golden-yellow silk fringe; baluster-turned
 legs and Baroque-scrolled stretchers.



[NUMBER 177]

177. DECORATED AND CARVED WALNUT WRITING CABINET, ON STAND
Spanish, Late XVII Century

Rectangular cabinet with let-down front uncovering small drawers
 125- tooled with angel heads, flowers, and inscriptions. The rising lid
 painted with a representation of the Annunciation. On carved and
 arched stand of later period. Height, 48 inches; width, 29 inches

[See illustration]



[NUMBER 178]

178. LOUIS XV CARVED AND GILDED WALL MIRROR

French, XVIII Century

Rectangular frame surmounted by openwork cresting carved as martial trophies, birds, dolphins, and flowers.

Height, 40 inches; width, 20 inches

[See illustration]

179. SET OF FOUR CHESTNUT SIDE CHAIRS

Spanish Baroque

Fireside chair with fancifully carved back, posts, and stretchers. Seat recovered with brown leather.

180. SET OF FOUR CARVED CHESTNUT SIDE CHAIRS

Spanish Baroque

Similar to the preceding.

181. OIL PAINTING ON PANEL, IN CARVED AND GILDED FRAME
Spanish, XVII Century
 Oval, with depiction of the Virgin Mother and Child in a glory, surrounded by seraphim and cherubim. Molded frame with Baroque-
 15- scrolled cresting. *Panel: Height, 25 inches; width, 19 inches*
182. PINO WOOD ARMARIO *Spanish, XVIII-XIX Century*
 Upright, with paneled sides, front with double cupboards having
 30- latticed upper sections surmounting lower panels and drawer incised
 with medallions and bird figures; ball feet.
Height, 5 feet 8 inches; width, 35 inches
183. OLD SPANISH CARVED WALNUT LIBRARY TABLE
 The deep molded underframing fitted with two drawers carved with
 45- depending leafage; on lyre-shaped end supports with scrolled profiles.
Height, 32½ inches; length, 49 inches
184. WALL MIRROR WITH CARVED, PAINTED, AND GILDED FRAME
Spanish, XVIII Century
 45- Molded oblong frame, carved in relief with acanthus and flowers,
 enriched with old gilding against a painted background. Modern
 glass. *Height, 34½ inches; width, 40 inches*
185. PAIR OF REPOUSSÉ METAL LAMPADAIRES *Spanish Baroque*
 Tall shaft of *repoussé* tin set into iron scrolled tripod and surmounted
 by glass and tole octagonal lantern. Reconstructed.
 35- *Height, 5 feet 6 inches*
186. PAIR CARVED, PAINTED, AND GILDED LAMPADAIRES
Spanish, Late XVII Century
 25- Spiral-twisted shaft carved with grapevine, augmented with modern
 circular capital and square base; surmounted by perforated tin lantern
 of later date. *Height, 5 feet 2 inches*
187. CARVED WALNUT CABINET *Spanish, XVII Century*
 Rectangular cabinet fitted with two drawers above a central cupboard
 40- door, the front carved with geometrical motives and imbrications.
Height, 38 inches; length, 39½ inches

188. CARVED WALNUT SIDE TABLE *Italian, XVII Century*

Fitted with two deep frieze drawers carved in low relief to a geometrical design; polygonal stretchered legs. Top and stretcher restored.

Height, 31½ inches; length, 49 inches

30-

189. PAIR WALL MIRRORS IN CARVED, PAINTED, AND GILDED FRAME

Spanish, Early XVIII Century

Rectangular frame carved with leaf scrolls enriched with gilding in relief upon a painted background simulating figured marble. Modern glass.

Height, 36 inches; length, 47 inches

140-

[See illustration of one]



[NUMBER 189]



TURNED WALNUT AND WROUGHT IRON GUARD-ROOM TABLE
AND LATE XVII CENTURY SHRINE OF THE MADONNA

[NUMBERS 190 AND 191]

190. TURNED WALNUT GUARD-ROOM TABLE

MOUNTED IN WROUGHT IRON

Spanish, XVII Century

Massive oblong top, on trestle-like supports composed of baluster-turned and blocked legs, the stretchers connected by two scrolled iron underbraces.

Height, 33½ inches; length, 51½ inches

65-

[See illustration on preceding page]

191. SCULPTURED, POLYCHROMED, AND GILDED

SHRINE OF THE MADONNA

Spanish, circa 1700

Canopied tabernacle carved with pendant swags of flowers and draperies, angel heads, and strap-scrolling, enshrining a statuette of the Madonna represented standing on a sphere encircled by a serpent. The statuette exhibits skillful carving, the head and hands in ivory. Retains original polychromy and gilding.

Height, 42½ inches; width, 26 inches

130-

[See illustration on preceding page]

192. FOUR SPANISH CARVED CHESTNUT AND BEECHWOOD ARMCHAIRS
IN THE HEPPLEWHITE TASTE

Arched back with sheaf splat of five rails; open arms, slip seat in crimson damask, on square tapering legs.

60-

193. OAK SLANT-FRONT WRITING DESK IN THE
SPANISH LOUIS XV TASTE

With fitted interior, the valanced frieze arranged with two small drawers; on tapered cabriole legs.

Height, 39½ inches; width, 38 inches

15-

194. WALNUT CENTRE TABLE

Spanish Baroque

Oblong top, on open lyre-shaped end supports with scrolled profiles and secured by two similarly scrolled underbraces.

Height, 31 inches; length, 53 inches

30-

195. CARVED MAHOGANY SETTEE AND TWO ARMCHAIRS IN THE
HEPPLEWHITE TASTE
55- Three-chair-back settee, each open oval centred by strap-scrrolled
festooned splat; open laterally bowed arms, slip seat in blue silk
floral damask, tapered square legs. Armchairs to match. [Lot.]
196. SPANISH WALNUT BOUDOIR WRITING DESK
45- Oblong top, with recessed superstructure fitted with three drawers;
underframing with one small drawer, on stretchered lyre supports.
Height, 37½ inches; width, 25 inches
197. CARVED WALNUT CENTRE TABLE *Spanish Baroque*
35- Oblong top, the scalloped underframing fitted with two molded
drawers, on open lyre-shaped ends.
Height, 32½ inches; length, 54½ inches
198. SET OF SIX OLD SPANISH CARVED WALNUT SIDE CHAIRS IN
CRIMSON DAMASK
75- Of William and Mary type. Tall canted back with perforated and
arched cresting rail, covered in crimson floral damask; seat similarly
covered, stretchered square cabriole legs.
199. SET OF FIVE OLD SPANISH CARVED WALNUT SIDE CHAIRS IN
CRIMSON DAMASK
37 54 Similar to the preceding.
200. INLAID CHERRYWOOD TALL CASE CLOCK
30- *Spanish, Late XVIII Century*
Tall slender case of light cherrywood embellished with star *mar-*
queterie in different woods. Molded and domed hood enclosing
flower-painted wood dial. *Height, 8 feet*

- 35- 201. DECORATED BEDSTEAD *Catalan, XVIII Century*
Elaborately turned and balustered head- and footposts decorated with marbling; high arched and scrolled headboard, painted on an ivory ground with scrolling stems of green leafage and red roses, centring a cartouche depicting the martyrdom of St. Sebastian.
Height, 5 feet; width, 5 feet 3 inches

- Par 202. DECORATED BEDSTEAD *Catalan, XVIII Century*
Elaborately ring-turned posts and baluster legs, the turnings gilded; towering arched headboard painted bluish green and decorated with gilded baroque leaf scrolls, enclosing a coroneted Sacred Monogram.
Height, 7 feet 4 inches; width, 5 feet

- 310- 203. CARVED WALNUT REFECTORY TABLE
MOUNTED IN WROUGHT IRON *Spanish, XVII Century*
Oblong top, which has been reconditioned, on three finely carved lyre-shaped supports with scrolled profiles, connected by two pairs of arched wrought iron underbraces.
Height, 31 inches; length, 8 feet 8 inches
[See illustration]

- 100- 204. CARVED WALNUT ARMARIO OF GOTHIC DESIGN
Tall upright cabinet fitted with double doors paneled into sections, the doors with open lattices above six panels carved with fenestral tracery and linenfolds. *Height, 6 feet 4 inches; width, 34 inches*

- 80- 205. PAIR OF WALL MIRRORS WITH CARVED, PAINTED, AND
GILDED FRAMES *Spanish, XVIII Century*
Cartouche-shaped frame of pine embellished with carved groups of flowers and leafage, and painted blue and gold. Modern glass.
Height, 56 inches; width, 37 inches



[NUMBER 203]

206. CARVED WALNUT ARCÒN *Spanish Baroque*
 Oblong chest with molded hinged cover, the front and sides paneled into sections carved in relief with opposed S-scrollings bearing formalized blossoms; molded base fitted with drawer, on embryonic paw feet.
Height, 25 inches; length, 54½ inches

85-

[See illustration]

207. WALNUT AND PINO WOOD ARMARIO *Spanish, XVIII Century*
 Tall upright cupboard fitted with double doors paneled to an asymmetrical design of differing shaped compartments, and carved with rocaille cartouches and leafage; the interior shelved and with four drawers.
Height, 6 feet; width, 35 inches

75-

208. WALNUT SLANT-TOP DESK *Spanish, Louis XVI Period*
 Contains three long drawers, above which a hinged slant flap encloses small drawers and pigeonholes. Chased handles and escutcheons.
Height, 41 inches; width, 36 inches

25-

209. OLD SPANISH CARVED OAK CABINET À DEUX CORPS
 With arched pediment, the slightly recessed upper section with two doors, having panels carved with infloretted lozenge motives; the lower section similar.
Height, 6 feet 6 inches; width, 43 inches

40-

210. TURNED WALNUT BREAD CUPBOARD *Spanish, XVII Century*
 Oblong, with double cupboards having fluted stiles and with openwork turned spindles; on bun feet. Front restored.
Height, 26 inches; length, 38 inches

15-

211. OLD SPANISH WALNUT MARQUETERIE CABINET ON PUENTE BASE
 Small rectangular cabinet with fall front opening to interior fitted with varisized drawers, which with the front are veneered in different colored woods to a fine *marqueterie* design. The carved walnut *puente* modern.
Total height, 51½ inches; width, 30 inches

40-

212. OLD SPANISH PANELED WALNUT ARMARIO WITH CABRIOLE LEGS
 Serpentine-arched cabinet fitted with double paneled doors, on short cabriole legs with claw-and-ball feet.
Height, 5 feet 9 inches; width, 52 inches

25-



[NUMBER 206]

213. PAIR RENAISSANCE CARVED, PAINTED, AND GILDED COLUMNS

Spanish, XVII Century

Spirally twisted columns painted blue and carved in full relief with an entwined grapevine, which is gilded and surmounted by Corinthian capitals.

Height, 7 feet 6 inches

420-

[See illustration]

214. PAIR CARVED AND PAINTED DOORS *Spanish, XVIII Century*

Each with two sunk panels, the lower embossed with a diamond motive and the upper carved in flat relief with a gadrooned jardinière filled with flowers; finished chocolate brown.

Height, 6 feet 8½ inches; total width, 4 feet 7½ inches

25-

215. TWO SCULPTURED PINO WOOD PANELS ARRANGED AS DOOR

Spanish, Late XVII Century

Both panels carved in high relief with angel heads, gloria, scrollwork, and flowers. Mounted as door in oak frame. Imperfect.

Height, 60 inches; width, 40 inches

40-

216. PAIR LOUIS XVI CARVED AND GILDED COLUMNS

Spanish, XVIII Century

Round fluted column with round base, carved with beribboned swags of flowers and surmounted by a gilded Corinthian capital. Need small repairs to capitals.

Height, 9 feet 6 inches

120-

217. PAIR LOUIS XVI CARVED AND GILDED COLUMNS

Spanish, XVIII Century

Similar to the preceding.

Height, 9 feet 6 inches

Pair

218. LOT OF ROMANESQUE SCULPTURED STONE COLUMNS

Spanish, XII Century

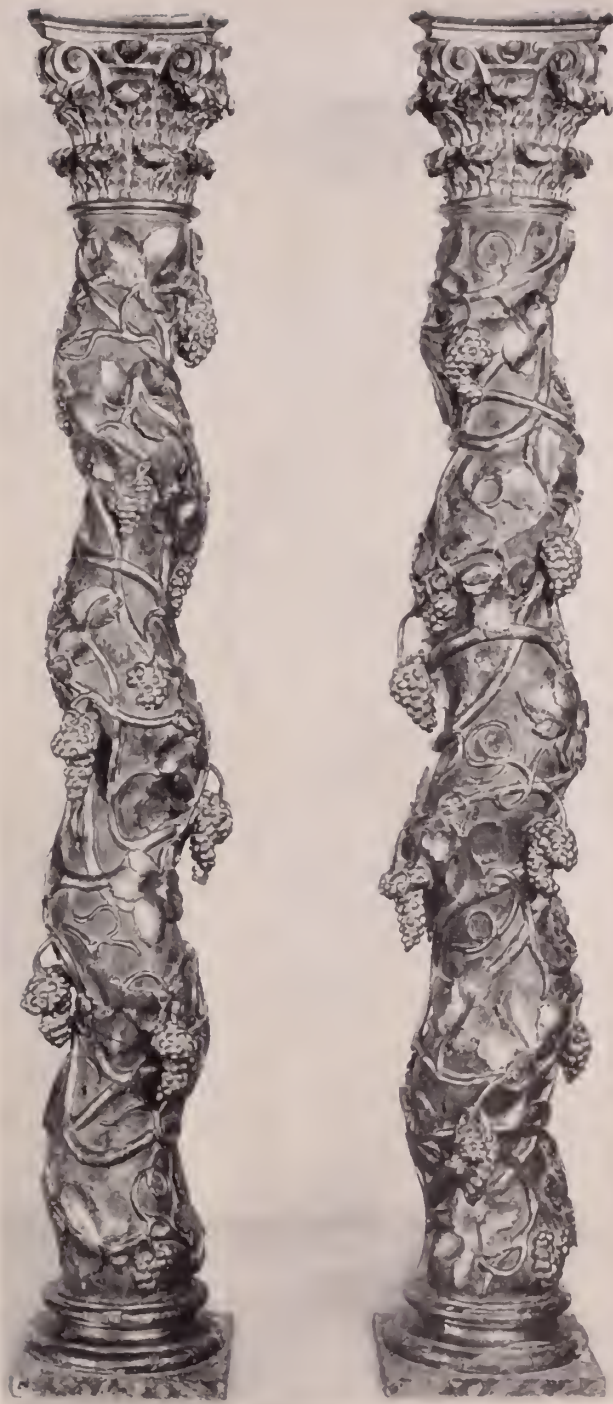
Comprising two large and four small columns of quatrefoil section (five broken), three octagonal bases, and three capitals. [Lot.]

35-

219. CARVED CHESTNUT CHAIR IN THE RENAISSANCE TASTE

Tall panel back elaborately carved with wyverns flanking the figure of a saint enclosed within a niche; broad molded arms, seat hinged to chest base paneled and carved with 'Romaine' medallions.

70-



[NUMBER 213]

220. INLAID KINGWOOD COIFFEUSE *French, XVIII Century*
 Oblong top with two rising flaps and hinged mirror, front with two drawers and pull-out writing slide, four tapered and molded square legs. Reconditioned. *Height, 28½ inches; length, 29½ inches*
 30-
221. SET OF SIX WALNUT SIDE CHAIRS IN CRIMSON DAMASK *Spanish, XVIII Century*
 In the Queen Anne taste. Open back with pierced strap splat; slip seat in crimson floral damask, valanced seat rail, on round legs with pad feet.
 150-
222. PAIR CARVED AND PARCEL-GILDED ENCOIGNURE TABLES *Spanish or Portuguese, XVIII Century*
 Segmental top on three stretched cabriole legs terminating in claw-and-ball feet. Stretchers restored.
 30- *Height, 27 inches; width, 29½ inches*
223. LOUIS XV PANELED WALNUT BUREAU *Flemish, XVIII Century*
 Shaped top with recessed superstructure fitted with three small drawers, the body of slightly *bombé* contour with two small drawers above three long drawers. *Height, 35 inches; width, 33 inches*
 75-
224. WALNUT DROP-LEAF TABLE *Spanish, XVII Century*
 Oval top with two drop leaves, the underframing fitted with two small drawers; slightly splayed baluster- and reel-turned stretched legs. *Height, 27 inches; length extended, 42 inches*
 30-
225. SCULPTURED WOOD FIGURE OF THE SAVIOR *Spanish, circa 1600*
 Enveloped by a crimson cloak (hands missing). With contemporary molded wood plinth. *Height, 22 inches*
 30-
226. SCULPTURED AND POLYCHROMED STATUETTE *Spanish, Late XVII Century*
 Standing figure of the Virgin of the Crescent, wearing elaborate robes and in the attitude of prayer. Slight damage. *Height, 14½ inches*
 25-

- 20- 227. CARVED PINO WOOD COFFEE TABLE *Spanish Baroque*
 Oblong top cleated to carved trestle legs with large-headed iron nails.
 One drawer. *Height, 20½ inches; length, 27 inches*
- 25- 228. WROUGHT IRON LECTERN *Spanish Baroque*
 Balustered shaft supporting missal rack with a heraldic design exhibiting the arms of Castile, silhouetted before a panel of crimson damask; scrolled tripod base. *Height, 53 inches*
- 65- 229. HAMMERED COPPER BRAZIER AND WATER VESSEL *Spanish, XVIII Century*
 [A] Tray top stand for live charcoal on brass paw feet. [B] Ovoidal water jar with handles. [Lot.] *Heights, 16 and 18 inches*
- 12 ¹⁵ 230. PAINTED TOLE TRAY *Spanish, circa 1820*
 Shaped oblong tray with lacelike rim, painted with fruit, flowers and a robin's nest on a black ground. *Length, 27½ inches; width, 20½ inches*

[END OF FIRST SESSION]



SECOND AND LAST SESSION

Saturday, November 1, 1930, at 2:15 p.m.

Catalogue Numbers 231 to 447 Inclusive

SPANISH AND PERSIAN POTTERY

- 15- 231. CATALAN GREEN GLAZED WATER JAR WITH RELIEF DECORATION
Ovoidal, with two coiled saurians as handles; the cover with bird
finial. Invested with a mottled cucumber green glaze.
Height, 22 inches
- 17 50 232. RAKKA DECORATED POTTERY BOWL *Mesopotamian, XIII Century*
Decorated with panels of foliage arabesques in black on deep tur-
quoise glaze. Repaired. *Diameter, 8¼ inches; height, 4 inches*
- 60- 233. GREEN GLAZED POTTERY JAR *Andalusian, XVIII Century*
Pear-shaped, with short neck and shoulder handles. Glazed cucum-
ber green, and set into iron scrolled tripod.
Height with stand, 35 inches; diameter, 20 inches
- 45 234. GLAZED EARTHEN WARE JAR *Catalonian, XVIII Century*
Pear-shaped, with four loop handles at shoulder; formal flower and
cord decoration in raised slip. Set into iron tripod.
Height with stand, 35 inches; diameter, 21 inches
- 30- 235. CATALAN GREEN GLAZED COVERED JAR WITH RELIEF DECORATION
Oviform, with two coiled saurians in full relief as handles, the body
modeled with ascending sprays of leafage and perched birds; domed
cover with animalistic finial. Coated with a cucumber green glaze.
Slight damage. *Height, 32½ inches*
- 20- 236. CATALAN GREEN GLAZED JAR WITH RELIEF DECORATION
Similar to the preceding with slight variations, and without cover.
Height, 24½ inches
- 105- 237. RHAGES POTTERY WINE BOTTLE *Persian, XIII Century*
Spherical, with tapered narrow neck; heavily glazed in turquoise
green and with silvery iridescence. Repaired. *Height, 9¾ inches*
[See illustration on following page]



[239]

[237]

[238]

- 45- 238. RHAGES POTTERY PITCHER *Persian, XIII Century*
 Bulbous, with loop handle; the neck modeled as a bird head. Glazed
 brilliant turquoise with rich iridescence. Repaired.

Height, 8½ inches

[See illustration]

- 30- 239. RHAGES POTTERY PITCHER *Persian, XIII Century*
 Pear-shaped with open handle and small neck. Cracked turquoise
 blue glaze.

Height, 9 inches

[See illustration]

- 30- 240. DECORATED EARTHEN WARE JAR *Castilian, XVIII Century*
 Pear-shaped with loop handles, modeled in relief with swags of
 flowers, mascarons, and the lion of Castile. Rim damaged. Set into
 an iron scrolled tripod.

Height with stand, 31 inches; diameter, 17 inches

- 70- 241. TWO HISPANO-MOESQUE POTTERY JARS *XV Century*
 One ovoidal, the neck with incised decoration; the other terra cotta
 color. Set into iron scrolled tripods.

Heights with stands, 28 and 29 inches

- 80- 242. TWO GREEN GLAZED POTTERY JARS *Andalusian, XVIII Century*
 Pear-shaped with flaring short necks. One glazed in deep spinach
 green, the other in apple green. Set into iron scrolled tripods.

Height with stand, 29 inches



[NUMBER 243]

243. TALAVERA FAÏENCE TILE PICTURE: AMERICA

Spanish, XVIII Century

70 Represented by two Indians on a river bank, surrounded by leaf volutes, flowers and mascarons. Painted in cobalt, green and yellow, and captioned 'America'. Composed of twenty-one tiles in pine frame.

Height, 5 feet; width, 54 inches

[See illustration]

244. TALAVERA FAÏENCE TILE PICTURE: ASIA *Spanish, XVIII Century*
Represented by a figure riding on an elephant, an archer, and a native, surrounded by flower volutes and mascarons. Captioned 'Elacia'. Composed of twenty-one tiles in pine frame.

Height, 5 feet; width, 54 inches

95-

245. TALAVERA FAÏENCE TILE PICTURE: EUROPE

Spanish, XVIII Century

Represented by two gallants in Louis Quinze costume, surrounded by voluted leaf scrolls, flowers and mascarons. Composed of twenty-one tiles in pine frame.

Height, 5 feet; width, 54 inches

75-

246. ONE HUNDRED AND THIRTEEN HISPANO-MORESQUE LUSTRE TILES
XV-XVI Century

Square tiles, glazed and decorated in differing geometrical and formalized designs. [Lot.] *Each tile approximately 4½ inches square*

40-

247. SULTANABAD POTTERY VASE *Persian, XIV Century*

Ovoidal jar with four loop handles at the neck. Coated with crackled deep turquoise glaze with silvery iridescence. *Height, 15 inches*

50-

248. PANEL OF EIGHT ISPAHAN GLAZED POTTERY TILES

Persian, XVII Century

Decorated in rose, green and blue enamel with bouquet of roses in leaf palmette on a white ground. [Lot.] *Each tile: 9 inches square*

40-



[NUMBER 249]

249. RARE HISPANO-MORESQUE TERRA-COTTA MOSQUE JAR
Cordova, XII-XI Century

Excavated piece from the Mosque of Cordova. Inverted pear-shape with flaring short neck and shoulder handles. One handle restored. The shoulder encircled by two bands of Moorish inscription and diaper ornament. Set into wrought iron tripod.

Size of jar: Height, 28 inches; diameter, 24 inches

[See illustration]

250. SULTANABAD POTTERY JAR *Persian, XII Century*

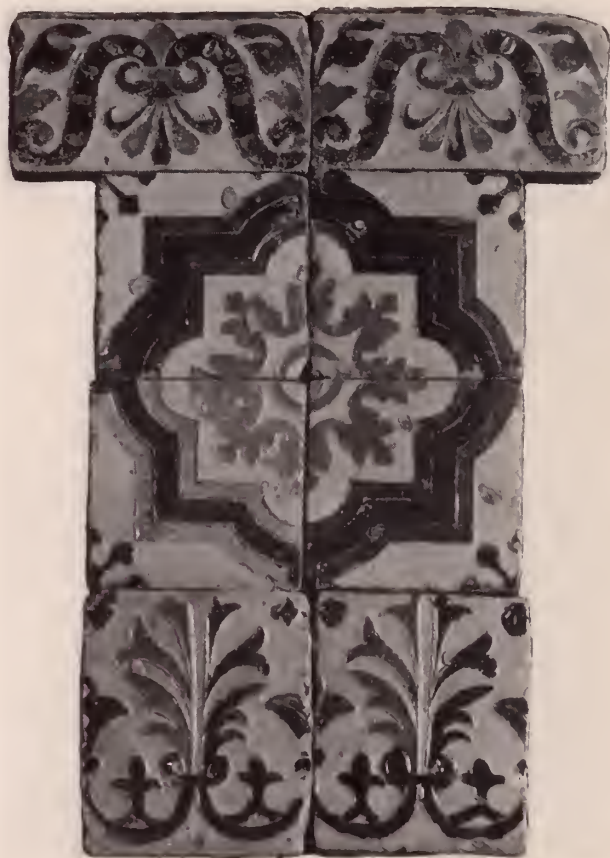
Pear-shaped, with colored neck invested with brilliant turquoise green glaze shading to cobalt, the lower part unglazed. *Height, 21 inches*

251. *Pan* HISPANO-MORESQUE POTTERY WELL-HEAD *Cordova, XII Century*
Excavated piece, cylindrical with flaring base and molded rim, the
sides incised with bands of hieroglyphics alternating with rosette
medallions. Fragmentary. *Height, 31 inches; diameter, 26 inches*

252. ONE THOUSAND ONE HUNDRED AND FORTY-FOUR
OLD VALENCIAN GLAZED POTTERY TILES

275 Four of the square tiles placed together form a pattern of a stellate
motive paneled in green and yellow, enclosing a blue leaf rosette on
a white ground. [Lot.] *Each tile approximately 4½ inches square*

[See illustration of four]



[NUMBERS 252 AND 253]

253. TWO HUNDRED AND TEN OLD VALENCIAN GLAZED POTTERY TILES
One hundred thirty outer border, and eighty inner border tiles;
glazed on a white ground to a strap-scrrolled design to form a border
decoration to the preceding tiles. [Lot.]

140-

130 tiles: approximately $6\frac{1}{2} \times 3\frac{1}{2}$ inches80 tiles: approximately $5\frac{1}{2} \times 4\frac{1}{2}$ inches

[See illustration of four]

EMBROIDERIES, VELVETS, AND BROCADES

254. SILVER-EMBROIDERED ROSE-CRIMSON SILK CUSHION COVER

Italian, circa 1820

15-

Worked in silver with a crown and wreath enclosing a monstrance;
silver fringe.

255. MOSS GREEN CUT VELVET AND SEVENTEENTH CENTURY
EMBROIDERY FRONTAL

70-

Woven with a Louis XIII design of rows of scrolling stems of
palmettes; headed by a panel of ivory silk, embroidered with scroll-
ing branches of lilies and other blossoms. 40 inches square

256. APPLIQUÉ GOLD AND SILK EMBROIDERED ECCLESIASTICAL BANNER

Spanish, XVII Century

20-

Red silk ground, restored, appliquéd-embroidered centrally with an
heraldic cartouche beneath the Sacred Monogram, and above a
depiction of the Host. Fringed.*Length, 32 inches; depth, 34 inches*

257. TWO CROSS-STITCH NEEDLEWORK LINEN SAMPLERS

Spanish, dated 1761 and 1802

30-

Worked in pastel silks with rich geometrical borders enclosing for-
malized trees and sprays of flowers, one with domestic animals and
birds.*Length, 24 inches; width, $23\frac{1}{2}$ inches**Length, 26 inches; width, 23 inches*

258. SILVER-EMBROIDERED CRIMSON SILK BANNER *Italian, circa 1820*

20-

Swallow-tail banner enriched with silver, and embroidered with a
silver border of spiral ribbons enclosing two ecclesiastical medallions
and an appliquéd gold and silver processional chair.*Length, 41 inches; depth, 46 inches*

259. TWO CROSS-STITCH NEEDLEWORK LINEN SAMPLERS *Spanish, XVIII Century*
 20- Worked with borders of geometrical ornaments enclosing double-headed eagles, small animals and birds, and formalized sprays of flowers. *23 and 22 inches square*
260. SILK BROCADE TABLE COVER *Persian, XVIII Century*
 35- Sapphire blue silk ground brocaded with detached sprays of small flowers and perched birds; crimson and gold brocade border. *Length, 43 inches; width, 38 inches*
- 260A. GARNET SILK VELVET HANGING ENRICHED WITH APPLIQUÉ GOLD LACE *Spanish, XVII Century*
 280- Composed of four joined lengths of beautifully textured crimson silk velvet enriched with gold lace border and lined with rose silk. *6 feet 8 inches square*
261. AMETHYST GOLD AND SILVER BROCADE CHASUBLE *Louis Philippe Period*
 30- Louis XV design of bunches of golden fruit and scrolling stems of pale blue, yellow, and white flowers.
262. SILK AND SILVER BROCADE CHASUBLE *Spanish, Louis XV Period*
 30- Deep rose ground brocaded in silk and silver with undulating branches bearing blossoms. Edged in silver *passementerie*.
263. GOLD AND SILK BROCADE CHASUBLE *Spanish, Louis XV Period*
 35- Ivory ground brocaded in brilliantly colored silks and gold threads with an allover design of naturalistic bunches and jardinières of flowers.
264. PEACH VELVET CAPE *French, XVIII Century*
 45- Lappet-shaped cape of beautiful peach velvet, bordered with silver galloon. *Length, 52 inches; depth, 51 inches*
265. OLD PERSIAN GOLD, SILVER AND BLUE SILK BROCADE HANGING *Spanish, XVIII Century*
 60- Blue silk ground brocaded in gold and silver with a slender ovoid above a vase supported by exotic birds, symbolizing the tree of life, and surmounted by an appliqué-embroidered heraldic lion of Persia. Broad border fringed. *Length, 6 feet 7 inches; width, 42 inches*

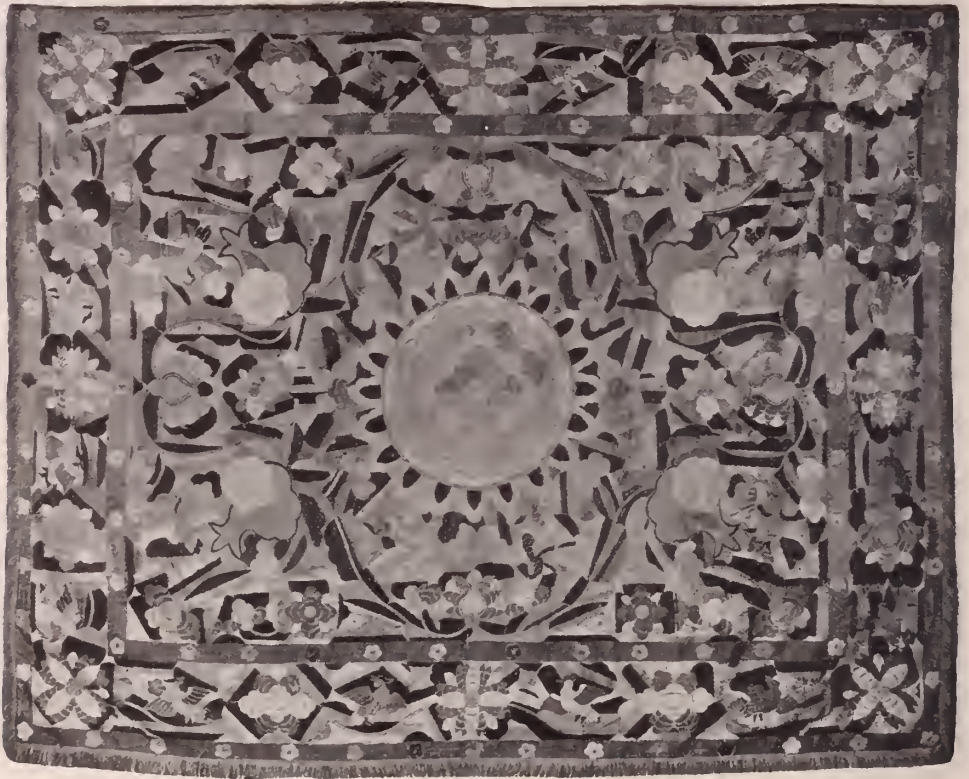


[NUMBER 266]

266. GARNET SILK VELVET CHASUBLE WITH GOLD AND SILK
EMBROIDERED ORPHREYS *Spanish Renaissance*
Beautifully textured vestment, the front and back embellished with
needle-painted long orphreys showing the Madonna and Child, the
Savior, and four saints in Renaissance tabernacles sumptuously em-
broidered in gold thread and colored silks.

225-

[See illustration]



[NUMBER 267]

267. FLOSS SILK LAIDWORK EMBROIDERY COVERLET

Portuguese East Indies, XVIII Century

Richly worked in laid pastel silks and gold thread, with a latticed lotus medallion surrounded by blossoms and leafage, within a border of lotus flowers and birds. Length, 8 feet; width, 6 feet 1 inch

[See illustration]

268. SALMON PINK BROCADE COVERLET

Spanish, XVIII Century

Régence design of garlands of pale blue and lavender blossoms surrounded with spatulate floral sprays, on a salmon pink ground, with sky blue silk flounce. Length, 6 feet 7 inches; width, 5 feet 4 inches

269. OLD SPANISH SILK BROCADE COVERLET

Ivory ground brocaded with brilliantly colored branches of flowers disposed in symmetrical upcurved formation, alternating with jardinières.

Length, 6 feet 3 inches; width, 6 feet

65-

270. OLD SPANISH APPLIQUÉ-EMBROIDERED SATIN FRONTAL

Panel of blue satin appliqué with a central infloretted cartouche, and bordered at either end with Renaissance scrollings in yellow and ivory silks, outlined in gold *cordonnets*.

Length, 6 feet 7 inches; depth, 21 inches

25-

271. GREEN VELVET ALTAR FRONTAL WITH BORDER OF SEVENTEENTH CENTURY CRIMSON DAMASK

Panel of forest green velvet, bordered with broad bands of rose-crimson damask developing a Louis XIII design. Paneled in gold galloon.

Length, 6 feet; depth, 49 inches

30-

272. OLD SPANISH SAPPHIRE BLUE SILK BROCADE PIANO COVER

Deep blue ground patterned with undulating lacelike bands supporting nosegays of small blossoms; trimmed with a broad silver *passementerie*.

50-

273. CANARY-YELLOW SATIN DAMASK PANEL *Spanish, Louis XII' Period*

Woven with opposed pairs of upcurved leafage enclosing spatulate pomegranate motives.

Length, 6 feet 7 inches; width, 5 feet 6 inches

55-

273A. OLD SPANISH GOLD-BROCADED SILK ALTAR FRONTAL

Panel of infloretted blue silk brocaded with gold arabesqued leafage edged with gold *passementerie*, and bordered with blue silk, fringed.

Length, 5 feet 6 inches; depth, 22 inches

20-

274. FRAPPÉ CRIMSON VELVET AND RENAISSANCE
GOLD-EMBROIDERED CHASUBLE

Fine old ruby velvet stamped with allover scrolled lattice design enclosing tiny sprigs of flowers and heraldic lions; orphreys of ruby velvet, with Renaissance embroidery in gold thread of pairs of floral scrollings.

220

275. GOLDEN YELLOW REP VELVET COVER *Spanish, XVIII Century*
Pattern of ribbed strips of golden yellow silk, *semé* with tiny rosettes in red and blue velvet; worn and discolored.

Length, 7 feet 10 inches; width, 6 feet

35-

276. OLD SPANISH SAPPHIRE BLUE SILK DAMASK COVERLET
Patterned with an allover design of naturalistic flowers.

Length, 7 feet 9 inches; width, 5 feet 8 inches

110-

277. OLD SPANISH BLUE SILK DAMASK COVERLET
Sky-blue silk *damassé* with an allover design of naturalistic branches of leafage and pomegranates.

Length, 7 feet 9 inches; width, 7 feet

40-

278. MOROCCAN STRIPED SILK COVER
Geometrical and rosette designs in lateral bands of color, the ends with birds perched on carnation shrubs.

Length, 7 feet 9 inches; width, 33 inches

30-



[NUMBER 279]

279. LOUIS XIV ROYAL JARDINIÈRE VELVET HANGING

Pattern of spatulate sprays of orange, yellow, and magenta blossoms with curling green leafage, supported on latticed frameworks.

Length, 8 feet 10 inches; width, 8 feet 2 inches

[See illustration]

280. LOUIS XIV ROYAL JARDINIÈRE VELVET HANGING

Design of the preceding. Corner missing.

Length, 9 feet 4 inches; width, 6 feet 10 inches

281. SAPPHIRE BLUE VELVET PLUVIALE

Empire Period

Bordered in gold galloon, the lustrous surface showing traces of former star appliqués.

Length, 8 feet 10 inches; depth, 6 feet 6 inches

282. SILK, GOLD AND SILVER BROCADE PANEL

Spanish, Louis XI Period

Drap d'or superimposed by an asymmetrical design of undulating green branches bearing shaded rose and purple flowers enriched with gold and silver; edged with gold galloon.

130-

Length, 8 feet 2 inches; width, 37 inches

283. OLD SPANISH AMETHYST VELVET COPE

Fluctuating amethyst velvet, the orphrey and hood banded in silver galloon, the cope with three broad bands of gold galloon.

80-

Length, 8 feet 3 inches; depth, 48 inches

284. CREWEL WORK COVERLET

Spanish, Early XIX Century

Net ground, worked in colored wools in star stitch with a brightly colored quatrefoil medallion enclosed by two nosegays of garden flowers, in a sky blue field.

55-

Length, 8 feet 2 inches; width, 57 inches

285. PANEL OF OLD SPANISH CRIMSON SILK DAMASK

Rose-crimson silk *damassé* to a floral design in the Louis XIV manner.

55-

Length, 8 feet; width, 7 feet

286. FLOWERED BROCADE PANEL

Spanish, XVII Century

Designed with large roses and other flowers in rose pink, green and golden yellow. Composed of five joined strips, with gold galloon of later period.

45-

Length, 9 feet 1 inch; width, 2 feet 8 inches

287. FLORENTINE RENAISSANCE APPLIQUÉ-EMBROIDERED SILK PANEL

Circa 1600

Ruby-red silk appliqué-embroidered in shaded ivory silk to a strap-scrolled design interlaced with formalized green and yellow leafage and blossoms centring flabellum motives.

110-

Length, 10 feet; width, 23 inches

288. CRIMSON DAMASK COVERLET

Spanish Baroque

Rose-crimson damask, patterned with huge upcurved leaves bearing large blossoms and pomegranates; trimmed with tasseled fringe.

70-

Length, 10 feet 2 inches; width, 6 feet 10 inches

289. POLYCHROMED FLOSS VELVET COLUMN HANGING

Italian, XVII Century

Crimson ground, with symmetrical design in colored floss velvets of leaf-scrolled cartouches and strap scrollings.

Length, 13 feet 2 inches; width, 17½ inches

110-

290. THE WALL COVERING OF A SALON, IN
PAINTED CORDOVA LEATHER*Spanish, circa 1850*

Comprising four large and two smaller panels, four side panels, and assortment of borders and trimmings. The six major panels painted with figures from the romantic novels in medieval costume, surrounded by festooned and gilded pilasters with scrolling leafage and centred below with an escutcheon; the side panels to match, and decorated with urns of flowers in the centre cartouches. [Lot.]

125-

SPANISH AND NEAR EASTERN RUGS AND CARPETS
OF THE XVII, XVIII, AND XIX CENTURIES

291. ALPUJARRA RUG

Patterned with jardinières of lozenge-shaped leaf ornaments in a lattice of primrose yellow; geometrical borders in colors of the field.

Length, 6 feet 9 inches; width, 4 feet

50-

292. ALPUJARRA RUG

Rose-crimson field, with all-over design of lozenge plaquettes in rose, yellow, and olive; rose and yellow diamond border.

Length, 6 feet 9 inches; width, 5 feet 5 inches

37 50

293. SPANISH RUG WITH UNCUT SILK PILE

XVIII Century

Leaf green field, somewhat worn and woven with central medallion and four jardinières of flowers; border of zig-zag fawn branches.

Length, 7 feet 7 inches; width, 6 feet

65-

294. ALPUJARRA ANIMAL RUG

Dated 1800

Midnight blue field, woven in crimson, white, and green with heraldic animals, vases of carnations enclosed in a square plaquette, crimson and yellow eight-pointed stars; midnight blue border with bunches of green grapes and hexagonal medallions of stars. Signed and dated 1800.

Length, 7 feet 5 inches; width, 6 feet

35-

295. ALPUJARRA RUG
 55- Primrose yellow ground, designed in looped pile with a scrolled angular green lattice enclosing lozenge-shaped leaf motives; rosette and pinnacled borders in colors of the field.
Length, 7 feet 7 inches; width, 6 feet 3 inches
296. ALPUJARRA RUG
 35- With repeated design of formalized jardinières of flowers in red, green and blue on an ivory ground. Fringed.
Length, 7 feet 10 inches; width, 6 feet 9 inches
297. ALPUJARRA RUG
 40- With repeated jardinière and hexagon design in blue, terra cotta and yellow on an ivory ground. Fringed.
Length, 7 feet 11 inches; width, 6 feet 8 inches
298. ALPUJARRA RUG
 35- Allover repeated design of juxtaposed birds and jardinières in light blue and crimson on an ivory ground. Fringed.
Length, 7 feet 8 inches; width, 6 feet 5 inches
299. ALPUJARRA RUG
 50- Dotted deep blue field woven with an allover design of scrolled scarlet diamond ornaments; zig-zag ribbon border in blue, scarlet, and yellow. *Length, 7 feet 7 inches; width, 6 feet 5 inches*
300. SPANISH RUG *Late XVII Century*
 500- Flat pileless rug worked with a cruciform medallion and two lyre-shaped trophies of leaf scrollings in a *café-au-lait* ground strewn with lilies and bird and animal figures. Mazarine blue border of scrolling leafage and lilies. *Length, 11 feet 2 inches; width, 6 feet 2 inches*
 [See illustration]
301. ARAGONESE JARDINIÈRE RUG
 25- Scarlet design in relief in looped pile developing rows of jardinières of flowers; fringed. *Length, 7 feet 5 inches; width, 6 feet 9 inches*
302. ALPUJARRA RUG OF ROSES
 45- Cypress green field, woven with rows of scattered stems of red roses; scarlet and green floral border.
Length, 7 feet 5 inches; width, 4 feet 10 inches



[NUMBER 300]

303. ALPUJARRA RUG

Allover design of scrolled rose and white diamond motives in a dotted royal blue ground; zig-zag rose and yellow ribbon border.

40-

Length, 7 feet 10 inches; width, 6 feet 5 inches

304. ALPUJARRA RUG

Sky blue field dotted with a diamond design in scarlet and yellow; rosetted border in colors of the field.

90-

Length, 7 feet 6 inches; width, 6 feet 5 inches

305. ALPUJARRA TILE RUG

Dotted greenish blue ground, woven with chains of scrolled lozenge-shaped scarlet tiles; zig-zag ribbon border in colors of the field.

35-

Length, 7 feet 6 inches; width, 6 feet 4 inches

306. ALPUJARRA RUG OF ROSES

Olive green field, woven with scattered stems of red roses; carmine floral border.

30-

Length, 7 feet 4 inches; width, 4 feet 8 inches

307. ALPUJARRA RUG

Sage field patterned in scarlet with a diamond lattice enclosing jardinières of foliage in scarlet and yellow; scarlet and yellow trellis border.

45-

Length, 6 feet 10 inches; width, 5 feet 6 inches

308. ALPUJARRA RUG

Worked in chenille in rose and soft brown with repeated formalized jardinières of flowers. Fringed.

40-

Length, 7 feet 3 inches; width, 6 feet 4 inches

309. SPANISH CARPET

Circa 1810

Terra cotta field, woven all over with large pastel-colored blossoms, with a huge stepped cruciform medallion principally in canary yellow, rose, and blue. Terra cotta border of large stellate plaquettes centred with 'turtle' figures, in colors of the field.

700-

Length, 17 feet; width, 10 feet

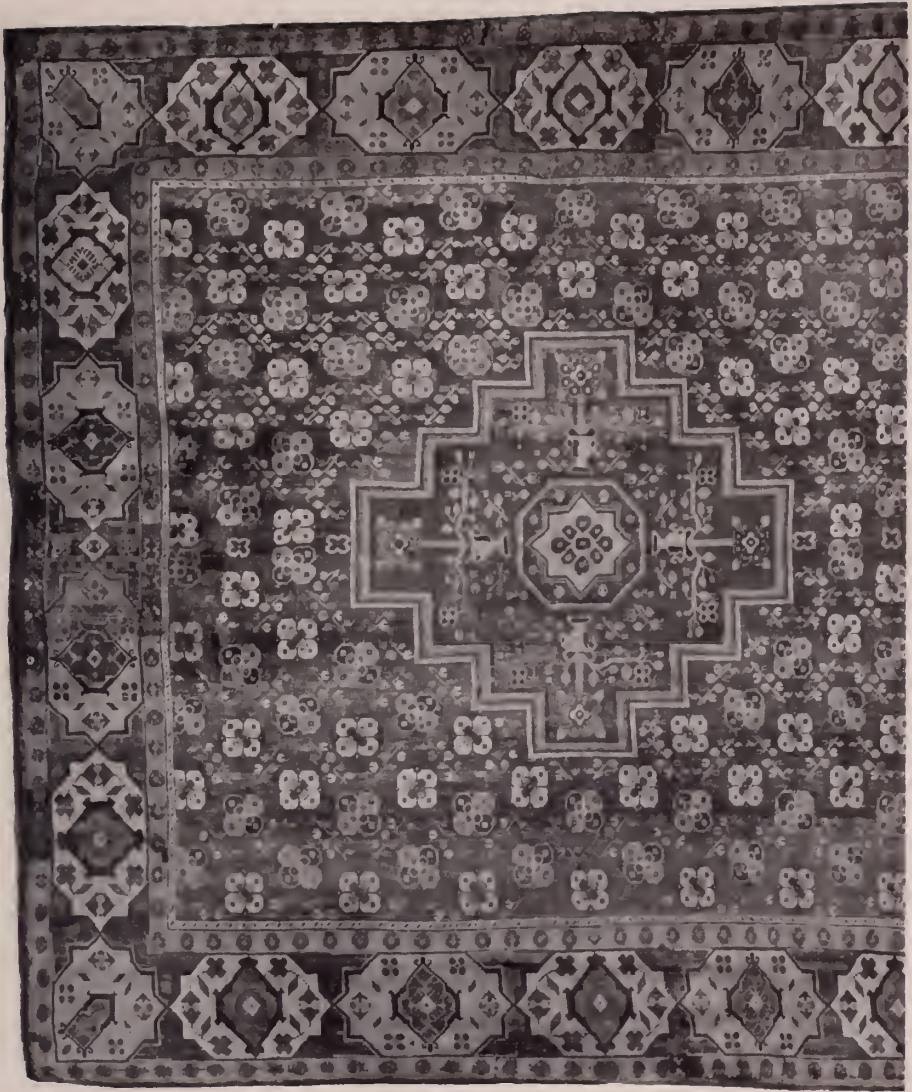
[See illustration of part]

310. ALPUJARRA RUG

Patterned with lateral rows of vase and diamond motives in scarlet and green, on a yellow lattice; geometrical borders in colors of the field.

45-

Length, 7 feet 3 inches; width, 5 feet 6 inches



[NUMBER 309]

311. ALPUJARRA RUG
 Tile design with cruciforms of green tulips on a ground of yellow and wine red; green, wine red, and yellow lozenge border.
 35 Length, 7 feet; width, 5 feet 6 inches
312. ALPUJARRA RUG
 Royal blue field woven with rows of scarlet stems of flowers; scarlet border *semé* with green lozenge motives. Shaggy pile; fringed.
 35 Length, 7 feet; width, 5 feet 5 inches
313. ARAGONESE RUG
 Brown field with allover design in sky blue of double ogival frameworks of leafage enveloping sprays of flowers; fringed.
 60 Length, 7 feet 5 inches; width, 7 feet 2 inches
314. ALPUJARRA RUG OF ROSES Dated 1800
 Powder blue field, woven with rows of stems of red roses; border of recurring vases of carnations and wild roses.
 45 Length, 7 feet 5 inches; width, 5 feet
315. ARAGONESE RUG
 Greenish blue field, patterned in rose-pink with rows of jardinières of flowers and leafage; fringed.
 40 Length, 8 feet 10 inches; width, 7 feet 6 inches
316. SAMARCAND MEDALLION RUG
 Primrose yellow field woven with square floral plaquettes and three circular medallions principally in mulberry, green, and yellow; mulberry borders of formalized waves, rosettes, and swastika fret.
 200 Length, 12 feet 7 inches; width, 6 feet 5 inches
317. CAUCASIAN RUG XVIII Century
Sang de boenf field, woven with an ivory diamond lattice containing stiff sprigs of flowers; ivory border of octagon rosettes, between pinnaced guards.
 45 Length, 5 feet 3 inches; width, 3 feet 6 inches
318. OUSHAK MEDALLION CARPET XVII Century
 Scarlet field, overrun with straggling branches and having a huge pendent medallion and spandrels in emerald green, ornamented with cruciform floral plaquettes in scarlet, blue, and yellow. Broad mazarine blue border of scarlet and green leaf plaquettes.
 1500 Length, 22 feet; width, 11 feet 7 inches
 [See illustration]



[NUMBER 318]

FURNITURE AND DECORATIONS

319. TWO BRONZE MORTARS *Spanish, XVI Century*
 Gothic type with ribbed sides and pierced handles.
Diameters, 5 and 6 inches
 55-
320. GOTHIC IRON MORTAR *Spanish, XV Century*
 Interesting early specimen with gargoyle handles of human mask
 form and serrated sides. *Height, 8 inches; diameter, 11 inches*
 25-
321. PAIR WROUGHT STEEL ANDIRONS *Spanish, XVIII Century*
 With floriated spiral pillars and splayed feet. Decorated with chisel-
 ing. *Height, 13 inches*
 55-
322. PAIR SCULPTURED AND POLYCHROMED STATUETTES *Spanish, Late XVII Century*
 Youthful figure of Our Lord seated in a *frailero* chair, His left hand
 upon the orb, His right in the attitude of benediction.
Height, 14 inches
 80-
323. TWO GILDED AND DECORATED COFFRETS *Spanish, XVI-XVII Century*
 Gable-top coffer decorated on a gold ground, one with scrollings
 of leafage and lilies in blue, the other with heads of saints.
Length, 11½ and 9¾ inches
 35-
324. MINIATURE CABINET PLAQUÉ WITH TORTOISE-SHELL AND
 INLAID WITH IVORY *South German or Tyrolese, XVIII Century*
 Small rectangular cabinet with galleried top, the front fitted with
 seven small drawers about a pedimented portal, *plaqué* with tortoise-
 shell and inlaid etched bone. Table base.
Height, 15½ inches; width, 12 inches
 35-
325. IVORY INLAID WALNUT LECTURNA *Spanish, XVIII Century*
 Bible stand enriched with inlaid plaquettes of ivory engraved with
 royal cipher, floral meanders and putti.
Height, 13 inches; width, 12½ inches
 25-
326. PAIR POLYCHROMED IRON LECTURNA *Spanish, XVII Century*
 Fashioned in openwork style, and retaining traces of old polychromy
 and chiseled Latin inscription. *Height, 12 inches; length, 15 inches*
 10-

327. HAND PAINTED AND CARVED IVORY FAN *Spanish, Louis XV Period*
Painted with a *fête champêtre* in the style of Watteau, the ivory stays
ornamentally pierced and painted, and enriched with gold and mother-
of-pearl. *Length open, 22 inches*
328. PAIR SPANISH GLASS AND GILDED TOLE CATHEDRAL LANTERNS
Hexagonal, the tole frame *reponssé* and pierced in floral and diaper
pattern. *Height, 29 inches; width, 13 inches*

[See illustration]



[NUMBER 328]



[NUMBER 329]

329. CARVED, PAINTED AND GILDED CIBORIUM *Spanish, dated 1603*
In architectural style, formed as a circular temple of gilded columns intersected by narrow panels of painted blue and gold leaf arabesques. The door painted with an escutcheon and the date.

Height, 26 inches; diameter, 20 inches

[See illustration]

330. CARVED PINO WOOD ANAQUEL WITH FAÏENCE JARS

Spanish, XVIII Century

Wall bracket fancifully carved and furnished with three Talavera faience pitchers to hold flowers. *Height, 30 inches; width, 25 inches*

- 100- 331. CARVED IVORY CRUCIFIX *French, XVII Century*
 Skillfully carved figure of Christ with anatomical detail. The death symbol and sacred monogram also in ivory. On wooden cross mounted in molded and arched wood frame of later date.
Size of frame: Height, 32 inches; width, 31 inches
- 30- 332. CHASED BRONZE GIRANDOLE *Spanish, XVIII Century*
 Hanging or standing lamp of baluster form with six radiating arms at the centre embellished with cherub heads and figures of genii.
Height, 36 inches
- 70- 333. SERIES OF TWELVE CHINESE PAINTED RICE PAPER PICTURES
 ILLUSTRATING AN IMPERIAL LEGEND *Circa 1800*
 Delightful illustrations of Chinese costume and mode of court life, painted in colors and gold on rice paper. In ebonized frames.
Height, 16 inches; width, 10 inches
- 35- 334. WROUGHT IRON VASERA, WITH SIX GLASSES *Spanish, XVIII Century*
 Wall bracket fancifully wrought in floriated style, accompanied by six Granada ribbed aquamarine glass tumblers. [Lot.]
Height, 27 inches; width, 20 inches
- 25- 335. THE ANNUNCIATION *Spanish School, XVIII Century*
 Oil painting on canvas in contemporary gilded frame, pierced and carved with rocaille foliage and shells. Frame slightly repaired.
Height, 17 inches; length, 32 inches
- 30- 336. CARVED AND POLYCHROMED WOOD STATUETTE *Spanish, XVII Century*
 Skillfully carved 'Cano' figure of a saintly Carthusian monk in vestments painted ivory, black and gold. With molded oval plinth.
Height, 20 inches
- 15- 337. SMALL MIRROR IN GILDED FRAME *Spanish, XVII Century*
 Frame molded in architectural style, the frieze decorated with a band of running leaf arabesques, grotesques and an escutcheon in blue and gold. Modern glass.
Height, 21 inches; width, 17 inches

338. PAIR CARVED AND GILDED ALTAR CANDLESTICKS
Spanish, XVIII Century
 30- Knopped and gadrooned shaft on trilateral base carved with blossoms.
Height, 32½ inches
339. PAIR CARVED AND GILDED ALTAR CANDLESTICKS
Spanish, XVIII Century
 30- Similar to the preceding.
Height, 32½ inches
340. SCULPTURED AND POLYCHROMED STATUETTE
Spanish, XVII Century
 50- VIRGIN OF THE CRESCENT. Standing figure of the Virgin Mother, her hooded head surmounted by a crown as a symbol of sovereignty, her hands in the attitude of prayer. The voluminous draperies are polychromed and gilded. Fingers damaged. *Height, 34½ inches*
 [See illustration]
341. ELABORATELY CARVED, POLYCHROMED AND GILDED TABERNACOLO
Spanish, XVII Century
 175- Of architectural contour with surbased arch pediment centring symmetrical Baroque scrollings, supported on fluted and leaf-carved pilasters and two spirally twisted columns entwined in relief with grapevines, enclosing an arched niche.
Height, 7 feet 10 inches; width, 6 feet 9 inches
 [See illustration]
342. OLD SPANISH TOLE HANGING LANTERN
 35- Quadrilateral glazed body with outset pilasters, and perforated dome top. Clear and colored glass. *Height, 22 inches*
343. WALL MIRROR WITH DECORATED FRAME *Spanish, XVIII Century*
 30- Rectangular frame of pine, carved, gilded, and veneered with glass painted to imitate tortoise shell. Modern glass.
Height, 28 inches; width, 25 inches
344. DECORATIVE FLORAL PANEL *Spanish, Louis XV Period*
 30- Painted before a parchment ground are repeated ogivals of leafage enclosing branches of naturalistic peonies. Framed.
Height, 30 inches; length, 57 inches



[NUMBERS 340 AND 341]



[NUMBER 345]

345. SPANISH GOTHIC WROUGHT IRON FIRE-GUARD

100- Polygonal uprights supporting two bowl-shaped cressets connected by an arched member. One side arranged with adjustable arm in the form of a horse mounted by two figures from which depends a baluster-form copper water jar. Bar base.

Height, 53½ inches; width, 35 inches

[See illustration]

346. CARVED, AND POLYCHROMED WOOD STATUETTE

Spanish, XVII Century

SAINT MIGUEL. Symbolizing virtue triumphant over evil. With contemporary molded and painted plinth. *Height, 32 inches*

15-

347. TWO OLD SPANISH WROUGHT IRON CANDELEROS

Balustered shaft supporting bracketed cross rail with three candle holders; tripod base. *Height, 51 inches*

60-

348. TWO OLD SPANISH WROUGHT IRON CANDELEROS

Similar to the preceding, with slight variations. *Height, 50 inches*

40-

349. PAIR CARVED AND GILDED TORCHÈRES

Spanish, Early XVIII Century

Baluster-shaped stem with fluted vase centre; scrolled triangular base carved with shell ornament, supporting modern sconce.

25-

Height, 35 1/2 inches

350. PAIR CARVED AND SILVERED TORCHÈRES

Spanish, Early XVIII Century

With baluster-shaped shaft on Baroque scrolled triangular base, pierced and carved with floral motive. *Height, 25 inches*

70-

351. BRIDAL MIRROR IN PAINTED AND LACQUERED WOOD CASE

Persian, XVIII Century

The mirror framed in borders of painted floral decoration under glass, in wood case with two doors elaborately painted with flowers and birds. *Height, 31 inches; width, 18 inches*

80-

352. GRAY AND GOLD TRUMEAU WITH DECORATIVE PAINTING

French, XVIII Century

185- The mirror in a gilded frame tastefully carved with leafage and baskets of flowers; above, a pastoral painting on canvas in an oval gilded frame carved with beading and ribbon knots.

Height, 63 inches; width, 29 inches

[See illustration]

353. CARVED AND POLYCHROMED WOOD STATUETTE

Spanish, XVII Century

30- Standing figure of a saint, her arms outstretched, her garments painted, incised, and gilded, simulating brocade. With contemporary carved and gilded plinth. With restorations. *Height, 31 inches*

354. CARVED FRUITWOOD COFFRET

Spanish, XVII Century

The front carved in a design of Gothic ornament in pointed arches. Ornamental iron lock and handles backed with ruby velvet.

80- *Height, 16 inches; length, 27 inches*

355. WALL MIRROR WITH CARVED, PAINTED AND GILDED FRAME

Spanish, XVIII Century

50- Frame rectangular, carved in bold relief with scrolled acanthus leaves, enriched with gilding against a painted background. Modern glass.

Height, 33½ inches; width, 27 inches

356. LOT OF SIXTY CARVED PINO WOOD CEILING CORBELS

Spanish, XVI Century

120- Volute bracket carved in undercut relief with a figure of a grotesque bird, monster, and similar subjects. [Lot.]

Effective length, 16½ inches

357. LOT OF FIFTY-EIGHT CARVED PINO WOOD CEILING CORBELS

Spanish, XVI-XVII Century

100- Volute bracket carved in undercut relief with a figure of a grotesque bird, monster, and similar subjects. [Lot.]

Effective length, 17 inches

358. PAIR SPANISH GILDED TOLE AND GLASS STELLATE LANTERNS

Cathedral type, with perforated top and base and spherical body.

Height, 27 inches

80-



[NUMBER 352]

- 55- 359. TURNED WALNUT AND DAMASK BENCH *Spanish, XVII Century*
Oblong, with ringed sturdy legs and stretchers; top in antique crimson and gold brocatelle and damask. With fringe and narrow galloon.
Height, 17 inches; length, 32 inches

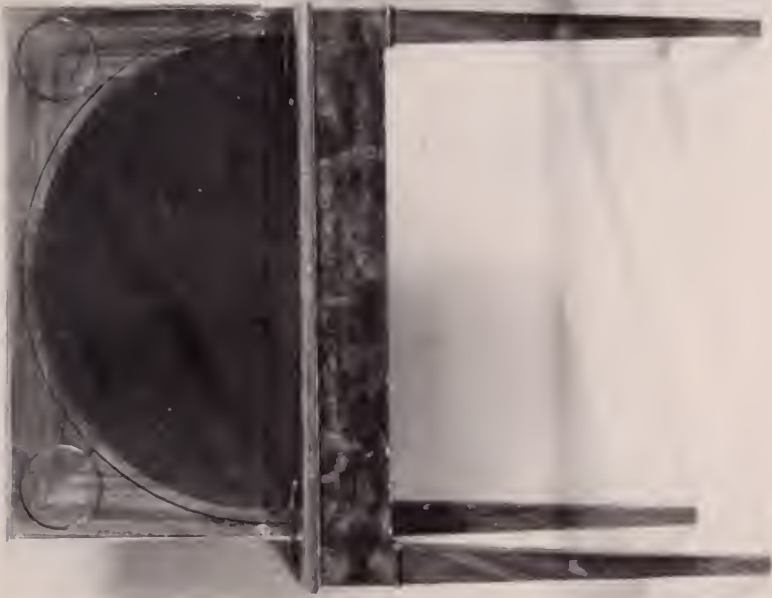


[NUMBER 360]

- 35- 360. PAIR SPANISH CARVED WALNUT ARMCHAIRS, IN EIGHTEENTH CENTURY EMBROIDERED GREEN VELVET
Seat and low oblong back covered in fine antique moss green velvet worked with peony heads and a scrolled branch ornament bearing flowers and leafage; flat arms with fluted knuckles, on leaf-carved uprights and carved frontal stretcher.

[See illustration]

- 40- 361. SPANISH RENAISSANCE DECORATED ARMORIAL COFFER
Oblong with domed lid. Covered in crimson fabric enriched with two gold- and silk-embroidered escutcheons, and profusely studded with brass-headed nails forming arabesque and escutcheon. Two ornamental pierced brass locks, gilded ball feet.
Height, 31 inches; length, 50 inches



BRASS-MOUNTED MAHOGANY CARD TABLES
[NUMBERS 363 AND 364]

362. TURNED WALNUT AND PINO WOOD SMALL TABLE *Spanish, XVII Century*
 40- Oblong top with carved drawer on legs and stretchers turned in ball pattern. *Height, 26 inches; length, 30 inches*
363. BRASS-MOUNTED MAHOGANY CARD TABLE *French, circa 1800*
 55- Rectangular top inlaid with a game board in light woods, bordered with brass moldings. When open, reveals baize lining and four recesses for candlesticks. On molded and tapered square legs. *Height, 28 inches; width open, 33 inches*
 [See illustration on preceding page]
364. BRASS-MOUNTED MAHOGANY CARD TABLE *French, circa 1800*
 35- Similar to the preceding. In beautifully figured wood, top inlaid with game board in different woods. *Height, 29 inches; width open, 36 inches*
 [See illustration on preceding page]
365. CARVED AND GILDED WALL MIRROR *Spanish, XVIII Century*
 40- Crested with scrolled and voluted leafage and blossoms, centring a laureled jardinière of flowers and fruit. *Height, 37 inches; width, 24 inches*
366. CHEST COVERED IN OLD BROWN CORDOVA LEATHER *Spanish, XVII Century*
 45- Rectangular two-handled chest with slightly domed lid, covered in old brown leather studded with brass-headed nails developing a design of symmetrical scrollings within panels; embryonic paw feet. Interior reconditioned. *Height, 19 inches; length, 46 inches*
367. OLD SPANISH CARVED WALNUT ARMORIAL BENCH
 35- Canted back carved with an heraldic escutcheon, panel seat on end trestle-like supports. *Length, 47 inches*
368. PAIR OLD FRENCH INLAID TULIPWOOD ENCOIGNURES
 Pass In the Louis Seize taste. Triangular cabinet fitted with double doors veneered with tulipwood and inlaid with walnut imbricated leafage. *Rouge de Flandre* marble top. *Height, 39 inches; width, 23½ inches*

- 65 369. TURNED OAK WRITING TABLE *Spanish, circa 1700*
Molded oblong top with one drawer on turned baluster legs braced with molded and curved stretchers.
Height, 26 inches; length, 37 inches
- 30 370. WROUGHT IRON FIRE SCREEN *Spanish, XVII Century*
Rectangular, on trestle supports fashioned in a floriated design and embellished with gilded bronze finials.
Height, 48 inches; width, 30 inches
- 40- 371. CARVED AND GILDED WALL MIRROR *Spanish, XVIII Century*
Rectangular frame, with rocaille-rococo cresting inset with small car-
touched mirror. *Height, 41 inches; width, 30 inches*
- 50- 372. PAIR INLAID FRUITWOOD COMMODES *French, Late XVIII Century*
Rectangular with three drawers, inlaid with bandings of rosewood and furnished with gilded bronze ring handles.
Height, 31½ inches; length, 33 inches
- 95- 373. CARVED WALNUT BENCH *Spanish, XVII Century*
Slightly canted back panel carved with an heraldic cartouche flanked by scrolling leafage and blossoms, panel seat with seat rail exhibiting a running guilloche; quadrangular supports. Restored.
Length, 6 feet
- 140- 374. SET OF EIGHT WALNUT SIDE CHAIRS *Spanish, XVIII Century*
Queen Anne type, with spooned back and vase panel splat; seat in canary-yellow silk floral damask, cabriole stretchered legs.
- 105- 375. SET OF SIX YELLOW DAMASK AND CARVED WALNUT SIDE CHAIRS *Spanish, XVIII Century*
Of Queen Anne type. Spooned back with scrolled uprights and vase panel splat. Seat covered in canary-yellow floral damask, shaped seat rail and cabriole legs connected by a scrolled stretcher.
- 52 50 376. CARVED WALNUT TABLE WITH SHAPED SUPPORTS *Spanish, XVII Century*
Rectangular top on boldly scrolled end supports, and with curved iron brace.
Height, 27 inches; length, 38 inches



[NUMBER 377]

377. WALL MIRROR WITH CARVED AND PARCEL-GILDED FRAME

Spanish, Late XVII Century

Oblong frame of pine carved at intervals with groups of leafage, gilded against a brown painted background. Modern glass.

Height, 50 inches; width, 43 inches

85-

[See illustration]

378. WALNUT DROP-LEAF TABLE

Spanish, XVIII Century

Oblong top with drop leaves and one drawer on turned baluster legs and stretchers.

Height, 25 1/2 inches; width extended, 38 inches

30-

379. WALNUT MARQUETERIE BOUDOIR SECRETARY

Louis Philippe Period

Small *bureau à cylindre*. With fitted interior, the underframing with three small drawers, on tapered cabriole legs. Inlaid with floral *marqueterie*.
 Height, 38 inches; width, 28 inches

80-

380. CARVED WALNUT WALL BENCH ON SCROLLED SUPPORTS

Spanish, XVII Century

Molded solid back and seat on end supports carved as bold scrolls, and braced by curved iron stretchers.
 Length, 6 feet 8 inches

40-

45-381. WALL MIRROR WITH CARVED AND PARCEL-GILDED FRAME

Spanish, Late XVII Century

Rectangular pine frame painted to simulate red tortoise-shell, and parcel-gilded. Modern glass.
 Height, 43 inches; width, 34 inches

382. CARVED WALNUT WALL BENCH ON TRESTLE SUPPORTS

Spanish, XVII Century

Molded solid back and seat on trestle-patterned molded legs and stretchers. With good patina.
 Length, 7 feet 6 inches

30

383. TWO WALNUT BANQUETTES IN DAMASK AND NEEDLEPOINT

Spanish, XVIII Century

Oblong tops and cabriole legs. One covered in green damask with a panel of brocatelle, the other in green damask with central panel of needlepoint of later date.
 Length, 27 inches

50-



[NUMBER 384]

384. ADORATION OF THE MAGI *Flemish School, circa 1500*

Centring the composition before a ruined stable structure is the full length figure of the Virgin Mother in the traditional crimson and blue robes, holding upon her lap the nude form of the Infant Christ. At left is the kneeling king Caspar, and at right the elaborately robed Melchior and Balthazar with their offerings of frankincense and myrrh. Through the aperture at left are seen mounted and dismounted figures.

Height, 56 inches; width, 49 inches

[See illustration]

450-



CARVED WALNUT GUARD-ROOM TABLE AND
CARVED AND GILDED WALL MIRROR

[NUMBERS 389 AND 390]

385. CARVED WALNUT TABLE ON SHAPED SUPPORTS *Spanish Baroque*
Molded oblong top on end supports of bold lyre form embellished
with turned finials and braced with curved iron stretchers.

80-

Height, 31 inches; length, 52 inches

386. WALL MIRROR WITH CARVED AND PARCEL GILDED FRAME
Spanish, Late XVII Century

Rectangular pine frame, the borders carved with imbricated leaf
ornament, and retains old gilding. Modern glass.

80-

Height, 44 inches; width, 33 inches

387. PAIR WALNUT BANQUETTES IN DAMASK AND SILK BROCADE
Spanish, XVIII Century

Oblong top covered in green floral damask centred with a panel of
green silk brocade; cabriole legs. *Length, 27 inches*

30-

388. CARVED WALNUT TABLE ON SHAPED SUPPORTS
Spanish, XVII Century

Oblong top fashioned from a single piece of brown walnut. On
gracefully curved end supports with turned upright member and
curved iron medial stretcher. *Height, 31½ inches; length, 55 inches*

65-

389. CARVED WALNUT GUARD-ROOM TABLE *Spanish, XVII Century*

Oblong top arranged with one underslung drawer carved with
rosettes; on scrolled open lyre-shaped supports connected by two
wrought iron underbraces. *Height, 31½ inches; length, 50 inches*

60-

[See illustration on preceding page]

390. CARVED AND GILDED WALL MIRROR *Spanish, XVIII Century*

Shaped oval mirror of modern date bordered with an *ajouré* frame
of rococo scrolls with stems of flowers, and with elaborate rococo
floral cresting. Repaired. *Height, 53 inches; width, 29 inches*

40-

[See illustration on preceding page]

- 105- 391. PAIR CARVED WALNUT BENCHES *Spanish, XVIII-XIX Century*
 Oblong seat and paneled back, the latter centred with a circular medallion carved in low relief with a jardinière of flowers and leafage; quadrangular trestle supports. *Length, 55 inches*

- 30- 392. TWO CARVED CHESTNUT SIDE CHAIRS *Spanish, XVIII Century*
 Open back with perforated cross panel, seat in canary-yellow broché trimmed with a ball fringe; stretched square legs. Restored.

- 25- 393. WALNUT TABLE WITH TRESTLE SUPPORTS *Spanish, XVII Century*
 Oblong top on turned flaring end supports with curved iron brace. *Height, 28 inches; length, 50 inches*

- 30- 394. CARVED AND GILDED WALL MIRROR *Spanish Rococo*
 Molded frame with elaborate rococo decoration of scrolled leafage and blossoms. *Height, 44 inches; width, 38½ inches*

- 60- 395. PAIR SPANISH RENAISSANCE WALNUT AND
 BROCATELLE ARMCHAIRS
 Seat and low oblong back covered in rose-crimson brocatelle, broad flat arms on square uprights with scroll-carved frontal stretcher. Entirely reconstructed.

- 50- 396. WALNUT LIBRARY TABLE *Spanish, XVII Century*
 Oblong overhanging top, the underframing fitted with three drawers with gouged decoration, supported on open lyre-shaped ends. *Height, 33 inches; length, 5 feet 9 inches*

397. WALNUT WRITING CABINET WITH INTARSIA DECORATION

Spanish, XVII Century

275- Rectangular cabinet of small drawers and cupboards surrounding an arched opening at the centre, enclosed by fall front. Elaborately inlaid with bone and ivory and light woods in a Moorish design of floral and diaper ornament. On carved and arcaded stand of later period. Some restoration.

Height with stand, 58 inches; width, 35 inches

[See illustration]

398. PAIR SPANISH RENAISSANCE APPLIQUÉ-EMBROIDERED SATIN AND WALNUT ARMCHAIRS

130- Severe *frailero* type, with broad flat molded arms, and square stretched legs. Back and seat covered in appliqué-embroidered crimson satin.

399. TWO SPANISH RENAISSANCE VELVET AND WALNUT ARMCHAIRS

Similar to the preceding, the backs and seats in amethyst velvet trimmed with a silver galloon and fringe.

80- 400. CARVED WALNUT ARCÒN

Catalonian, XVI Century

90- The front and sides carved with formalized marguerites and rosettes in arcaded panels, the stiles elaborately carved with imbricated or scale ornament. Original hinged lid; molded base and bracket-shaped supports.

Height, 44 inches; length, 56 inches



[NUMBER 397]



[NUMBER 401]

[NUMBER 402]

401. PAIR SPANISH RENAISSANCE WALNUT AND EMBROIDERED SILK
ARMCHAIRS

Low oblong back and seat covered in crimson silk, the former with appliqué embroidery of strap-scrolled leafage, and quadrangular brass finials; flat arms on square supports with scroll-cut frontal stretcher. Reconstructed.

[See illustration of one]

100-

402. SPANISH RENAISSANCE WALNUT AND EMBROIDERED SILK
ARMCHAIR

The seat and oblong back in blue silk, the latter appliqué-embroidered with leaf scrollings surrounding a sunburst with Sacred Monogram; flat arms on square fluted front posts, with strap-scrolled frontal stretcher. Reconstructed.

[See illustration]

35-



SPANISH EARLY XVII CENTURY CARVED WALNUT LIBRARY TABLE

[NUMBER 405]

403. SET OF FOUR DAMASK AND WALNUT SIDE CHAIRS

Spanish, XVIII Century

Of Queen Anne type, with spooned back and panel splat, seat in yellow floral damask, cabriole stretchered legs.

70-

404. WALL MIRROR WITH CARVED, PAINTED AND SILVERED FRAME

Spanish, XVII Century

Rectangular pine frame decorated with carved swags of fruit, leafage and husk ornament, painted blue, silver and gold. Modern glass.

Height, 50 inches; width, 37 inches

150-

405. CARVED WALNUT LIBRARY TABLE *Spanish, Early XVII Century*

Oblong overhanging top, the underframing fitted with three drawers paneled and finely carved in undercut relief with scrolled and voluted leafage; columnar H-stretchered legs.

Height, 33½ inches; length, 6 feet 9 inches

[See illustration on preceding page]

150-

406. CARVED WALNUT DINING TABLE *Spanish Renaissance*

Nicely patinated molded oblong top on flaring trestle-pattern end supports with stretchers, turned and spirally fluted, the dies carved as acanthus leaf medallions. Supports braced by gracefully voluted iron medial stretchers.

Height, 31½ inches; length, 7 feet 6 inches; width, 39 inches

110-

407. SET OF SIX OLD ALPUJARRA SCRATCH-CARVED CHESTNUT
LOW CHAIRS

Open back with pierced cross bar; 'stitched up' seat in crimson floral damask, stretchered legs.

75-



[NUMBER 408]

408. WALL MIRROR WITH CARVED AND PARCEL-GILDED FRAME

Spanish, Late XVII Century

Rectangular pine frame, retains old gilding and dark blue paint. Carved at intervals with groups of acanthus leaves in borders of echinus ornament.

Height, 50 inches; width, 41 inches

[See illustration]

409. SET OF SIX CARVED CHESTNUT SIDE CHAIRS *Spanish Baroque*

Small chair, the back occupied by carved horizontal and vertical slats, posts carved with imbricated ornament. Seat recovered with brown leather.

90-

410. CARVED WALNUT LONG REFECTORY TABLE *Spanish, circa 1600*
Long dining table with four drawers at one side, on trestle pattern end and centre supports carved in bold scroll form and braced by iron voluted stretchers.

120-

Height, 33 inches; length, 10 feet 6 inches; width, 28 inches

411. SCULPTURED AND POLYCHROMED FIGURE OF THE MADONNA
IN GILDED TABERNACLE *Saragosa, circa 1600*

Puss

Standing figure of the Madonna holding the infant Christ on her left arm, the base carved with an angel head, emblematic of virtue. Statue retains its original polychromy and gilding, and is enshrined within a contemporary carved and gilded wood tabernacle of architectural form, the interior embellished with inserted panels of silvered glass and with shaped pediment carved as a leaf and scroll cartouche that originally contained the relics of a saint.

Size of tabernacle: Height, 6 feet; width, 32½ inches

[See illustration]

412. SET OF SIX BLUE DAMASK AND CARVED WALNUT LOW CHAIRS
Spanish, XVIII Century

Cartouche-shaped back and seat covered in blue floral damask of later date; valanced seat rail and turned round legs.

105-

413. CARVED WALNUT GUARD-ROOM TABLE MOUNTED IN
WROUGHT IRON *Spanish, XVII Century*

Oblong top supported on open lyre-shaped ends with scrolled profiles, connected by two ogival-arched wrought iron braces.

Height, 30 inches; length, 8 feet 8 inches

130-

414. CRIMSON DAMASK AND WALNUT SETTEE AND EIGHT SIDE CHAIRS
Spanish, XVIII Century

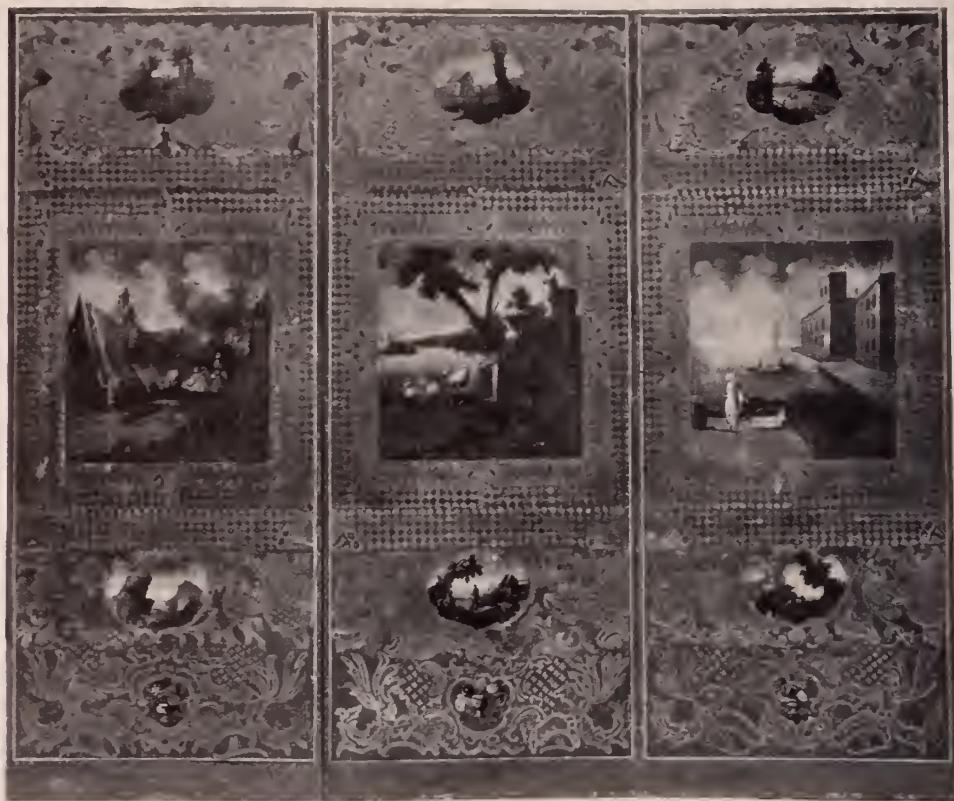
The settee, four-chair-back with scrolled cresting rail and vase panel splats, slightly cabriole stretchered legs. Covered in rose-crimson floral damask of later date. Side chairs to match. Some restorations.

Length of settee, 6 feet 2 inches

135-



[NUMBER 411]



[NUMBER 415]

415. DECORATED THREE-FOLD SCREEN *Spanish, XVIII Century*
 Canvas painted on both sides on a terra cotta ground with rococo lattices and leaf scrollings, landscape vignettes, and central panels with views of countrysides and harbors.

Height, 5 feet 11 inches; total length, 6 feet 10 inches

170-

[See illustration]

416. WALNUT CENTRE TABLE MOUNTED IN WROUGHT IRON *Italian, XVII Century*

Oblong top, supported on six slightly splayed baluster- and ring-turned legs connected by two pairs of wrought iron underbraces.

90-

Height, 33½ inches; length, 7 feet 6 inches



[NUMBER 417]

417. RENAISSANCE INLAID WALNUT VARGUEÑO WITH CARVED PUENTE
Toledo, circa 1600

Rectangular two-handled chest, the fall front with wrought iron plaquettes of arabesque design outlined before crimson velvet, opening to interior fitted with numerous varisized drawers, the fronts with architectural arcades with voluted pediments, outset bone colonettes and enriched with gilding. The *puente* with cherubim-head slides, on spirally twisted and fluted and quilled members connected by a central arcade; bar feet. Some restorations.

Total height, 58 inches; width, 42 inches

[See illustration]

450-

418. CARVED WALNUT REFECTORY TABLE *Spanish, circa 1600*
Long narrow top fashioned from a single piece; four drawers at one side decorated with carved rosette medallions. On six turned baluster legs braced with molded stretchers. Retains old patina.

Height, 33 inches; length, 12 feet 8 inches; width, 25 inches

180-

419. IMPORTANT EBONIZED TABLE WITH DECORATED TOP *Italian, circa 1700*

The inserted top presenting a sumptuous design of flower and leaf volutes framing a scroll cartouche which encloses a landscape vignette showing figures in costumes of the period by a well, executed in colors on a hard substance that resembles polished volcanic lava. On ebonized and scrolled end supports with curved iron braces. Repaired.

225-

Height, 33 inches; length, 57 inches; width, 29 inches

Collection of the Count of Montenegro, Palma di Majorca

[See illustration of top]

420. IMPORTANT EBONIZED TABLE WITH DECORATED TOP *Italian, circa 1700*

Companion to the preceding. Repaired.

Height, 33 inches; length, 57 inches; width, 29 inches

Collection of the Count of Montenegro, Palma di Majorca

225-

421. MARQUETERIE DECORATED WALNUT REFECTORY TABLE *Spanish Baroque*

Long narrow top, fashioned apparently from a single piece, and embellished with two inlaid bands of star *marqueterie* in light woods. On end supports carved in bold scroll form and braced by gracefully voluted iron medial stretcher.

100-

Height, 31 inches; length, 13 feet; width, 30 inches



DECORATED TOP OF IMPORTANT EBONIZED TABLE
[NUMBER 419]

422. EXCEPTIONALLY LONG CARVED WALNUT REFECTORY TABLE

Basque, XVII Century

Oblong overhanging top, the underframing carved with a series of geometrical plaquettes and fitted with six drawers; supported on six turned columnar legs connected by a double H-stretcher. Restorations to legs and stretchers.

Height, 32 inches; length, 16 feet 10 inches

[See illustration]

375-

423. SET OF TWELVE SPANISH CARVED WALNUT DINING CHAIRS

Square back with fret-carved horizontal splat, similarly carved front stretchers, seat covered with brown leather.

210-

424. PAINTED COMMODE

Spanish, XVIII Century

Oblong, with paneled sides having two wrought iron bail handles; front with four paneled drawers with wrought iron drop handles. Walnut finish.

Height, 38 inches; length, 45 inches

40-

425. MARQUETERIE-DECORATED WALNUT WRITING CABINET
ON STAND

Spanish, XVII Century

Small rectangular cabinet with let-down front enclosing small drawers. Elaborately inlaid with flowers, arabesques and cruciform motive in *marqueterie*. On carved and arcaded stand of later date.

Height with stand, 44 inches; width, 22 inches

100-

426. PAIR FORGED STEEL STANDING CANDELABRA

Spanish, XVII Century

With baluster shaft supporting candle sockets arranged in a circle and surmounting sconce for large single candle. Partly restored.

Height, 5 feet 6 inches

80-



[NUMBER 422]

427. DECORATED BEDSTEAD

Catalan, XVIII Century

60-

Richly turned and balustered posts, decorated with marbling; high arched and scrolled headboard, bordered with gilded rococo scrollings and painted on a turquoise ground with a cartouche surrounded by festoons of roses and drapery.

Height, 6 feet 5 inches; width, 5 feet

[See illustration]



[NUMBER 427]

428. FINELY SCULPTURED RENAISSANCE OAK ARMOIRE À DEUX CORPS
Normandy, circa 1600

Tall cabinet in two tiers enclosed by four doors with molded panels, each panel embellished with a carved allegorical human figure applied to the surface; the frieze, the arched crest of the upper doors, and the fronts of the two centre doors splendidly carved in low relief with leaf arabesques and mascarons. The doors are flanked and divided by rounded pilasters similarly carved and capped with small allegorical figures. Molded cornice and base. Well preserved, and has good patina.

150-

Height, 7 feet 6 inches; width, 52½ inches

[See illustration]

429. MARQUETERIE-DECORATED WALNUT WRITING CABINET
ON STAND *Spanish, Early XVIII Century*

Oblong case fitted with small drawers, with let-down front. Decorated with flower and leaf arabesques and crucifix inlaid in light woods. on table stand.

40-

Height of cabinet, 14½ inches; length, 19 inches

430. CARVED WALNUT ARCÒN *Spanish, XVII Century*
Rectangular chest, the front panel carved with two incurvate cruciform motives; bar base.

Height, 21 inches; length, 48 inches

35-

431. SPANISH RENAISSANCE CARVED WALNUT CABINET
Rectangular cabinet fitted with two drawers above two cupboards, paneled to a geometrical lozenge design, the stiles and rails with a running guilloche; the lock plates with metal mounts outlined before crimson velvet.

Height, 32½ inches; length, 41 inches

70-

432. CARVED AND POLYCHROMED VARGUEÑO *Spanish, circa 1600*
Rectangular two-handled chest, the fall front enriched with arabesque lock plates outlined before red velvet; the interior fitted with numerous small drawers centring a small cupboard elaborately decorated with lozenge panels painted with minute floral devices and enriched with gilding. *Puente modern.*

220-

Total height, 51½ inches; width, 38 inches



[NUMBER 428]



[NUMBER 433]

433. IMPORTANT CARVED WALNUT CHOIR, WITH TWENTY
SILLAS DE CORO, FROM THE CHURCH OF THE JESUIT FATHERS
HUESCA, ARAGON *Spanish, Early XVII Century*
Plain elegant stalls with S-scolled and voluted sides and hinged seats
with triglyph misereres; surmounted by arched panels flanked by
fluted half-round pilasters and crested by a frieze carved alternately
with rosettes and triglyphs. Comprising twenty seats and two corner
pieces, all with back panels. Some restorations.

Total height, 7 feet 5 inches

[See illustration]

434. WALNUT SLANT-TOP WRITING DESK *Spanish, XVIII Century*
Equipped with four drawers, furnished with pierced brass handles
and escutcheons; a hinged slant-flap above encloses a series of small
drawers and pigeonholes. *Height, 43 inches; width, 34 inches*

435. CARVED OAK CHEST IN THE RENAISSANCE TASTE
Oblong chest with hinged cover, the front paneled into sections with
flamboyant fenestral tracery. *Height, 21 1/2 inches; length, 56 inches*



IMPORTANT NAVARRESE CARVED AND TURNED
WALNUT BEDSTEAD OF THE XVII CENTURY

[NUMBER 436]

436. IMPORTANT CARVED AND TURNED WALNUT BEDSTEAD

Navarrese, XVII Century

Spirally turned posts, elaborately turned finials carved with cherub heads; rich arcaded and spindled headboards, surmounted by a symmetrical cresting of scrolling leafage and fruit, at which birds are pecking, and centred with an oval medallion carved in high relief with a figure of the Virgin.

275-

Height, 5 feet 5 inches; width, 4 feet 8 inches

[See illustration on preceding page]

437. WALNUT SECRETARY IN THE ENGLISH TASTE

Spanish, XVIII Century

In two sections. The upper with double doors, the lower section with slant front above four small and two long drawers trimmed with bat's-wing brasses and bail handles.

125-

Total height, 6 feet 6 inches; width, 38 inches

438. DECORATIVE MURAL PAINTING ON CANVAS

Spanish, XVIII Century

Decorated on a golden brown ground with a border of floral festoons and two octagonal medallions depicting Jael and Sisera and the Queen of Sheba before Solomon, the spandrels with vases, mascarons, and leaf *rincaux*. *Height, 7 feet 8 inches; length, 12 feet 9 inches*

Pass

439. FOUR-FOLD SCREEN PANELED WITH SPANISH RENAISSANCE ILLUMINATED VELLUM

Each fold paneled on both sides with three pages of a hymnal decorated on vellum with musical notations and Latin chant, and bordered in colors with mascarons, Renaissance monsters, strap scrollings, and cartouches; probably of the seventeenth century.

40-

Height, 5 feet 10½ inches; total length, 5 feet 10½ inches

440. CARVED WALNUT AND PINO WOOD ARMARIO

Spanish, XVIII-XIX Century

Upright, with double cupboards divided into small sunk panels carved with square leaf rosettes and centred with two leafy crosses; on fluted and voluted feet. Reconstructed.

50-

Height, 7 feet 7½ inches; width, 41 inches



CARVED AND INLAID WALNUT AND
PINO WOOD ENTRANCE DOORS

[NUMBER 444]

441. SIX CARVED CHESTNUT SILLAS DE CORO, OR CHOIR STALLS

Spanish, Early XVII Century

Scrolled sides, hinged seats with plain *misereres*, voluted brackets, paneled backs with flat paneled pilasters.

Height, 7 feet 2 inches; length of each pair, 5 feet 6 inches

125-

442. ELABORATELY CARVED, POLYCHROMED AND GILDED ORGAN SCREEN FROM THE CHURCH OF THE JESUIT FATHERS, HUESCA, ARAGON

Spanish, Late XVI Century

Composed of slender columns supporting entablature with broken arch molded pediment embellished at the centre with a cartouche ornament. The frieze splendidly carved with a series of running leaf volutes and mascarons in relief enriched with polychromy upon a gilded background. Also embellished with lambrequin-like panels carved with swags of flowers and scrolls and painted with a bishop's insignia and emblem of the Passion.

Height, 16 feet 6 inches; width, 12 feet 10 inches

Pass

443. PAIR CARVED AND PARCEL-GILDED BAROQUE COLUMNS

Spanish, Late XVII Century

Spiral column intertwined with carved and gilded branches of vines, and with gilded acanthus-leaf capitals.

Height, 6 feet

110-

444. PAIR CARVED AND INLAID WALNUT AND PINE WOOD ENTRANCE DOORS

Spanish, XVII Century

Divided by moldings into small square and L-shaped panels, ornamented with bandings and centred with a carved eight-pointed star containing a cherub head.

Height, 7 feet 2 inches; total width, 4 feet 8 inches

75-

[See illustration on preceding page]

445. PAIR CARVED PINO WOOD ENTRANCE DOORS [PORTA D'ENTRADE]
Spanish, XVII Century

110 - Composed of small sunk panels arranged geometrically and carved with formal leafage, rosettes and imbricated ornament. With original iron trimmings. *Height, 8 feet 5 inches; width, 52 inches*

446. PAIR CARVED PINO WOOD AND WALNUT DOORS
Spanish, XVII Century

30 - Divided into small bossed panels carved in relief with rosettes and rude branches of flowers; with original iron latch. One needs repair. *Height, 5 feet 3½ inches; total width, 6 feet 8 inches*

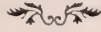
447. PANELED WALNUT AND PINE BUFFET
Spanish, Late XVII Century

40 - Two-handled chest fitted with two frieze drawers and two cupboard doors, centring a narrow double cupboard with an open grille composed of small balusters outlined before crimson damask. *Height, 44 inches; length, 46½ inches*

[END OF SALE]

<i>Lesson</i>	\$ 11118
2 "	30155-
<i>Total</i>	\$ 31273-

APPRAISALS
FOR UNITED STATES AND STATE TAX
INSURANCE AND OTHER PURPOSES
CATALOGUES OF PRIVATE COLLECTIONS



*A*PPRAISALS. The American Art Association - Anderson Galleries, Inc., will furnish appraisals, made by experts under its direct supervision, of art and literary property, jewelry and all personal effects, in the settlement of estates, for inheritance tax, insurance and other purposes.

CATALOGUES. The Company is prepared to supplement this appraisal work by making catalogues of private libraries, of the contents of homes or of entire estates, such catalogues to be modeled after the fine and intelligently produced Sales catalogues of the Company.

Upon request the Company will furnish the names of many Trust and Insurance Companies, Executors, Administrators, Trustees, Attorneys and private individuals for whom the Company has made appraisals which not only have been entirely satisfactory to them, but have been accepted by the United States Estate Tax Bureau, the State Tax Commission and others in interest.

AMERICAN ART ASSOCIATION
ANDERSON GALLERIES, INC.

30 EAST 57TH STREET
NEW YORK CITY

Telephone: PLAZA 1270

Composition and Presswork

by



PUBLISHERS PRINTING COMPANY

William Bradford Press

Half-tone Plates by

CHATHAM PHOTO-ENGRAVING CO.

New York

THE METROPOLITAN
MUSEUM OF ART

Thomas J. Watson Library

